

**First Light /** A pictorial exploration of the fundamental relationship between light and space. How a perfect harmony of the two can enrich and amplify the world around us. It can change the way we view the places we live, work and play in. This is a union that should be nurtured, cherished and celebrated.



**unios®**

## Lighting, personalised and simplified for the digital world

We are an Australian lighting brand that takes the complexity out of lighting by creating products and digital tools to deliver better project outcomes. Our meticulously developed products combined with simpler configuration tools and information access allows you to focus on what is most important, delivering a purposeful and well-planned project.

A catalogue of collaborations between leading lighting practitioners and Unios.

In a world where stories and experiences are increasingly shared in temporary bytes of digital information, this book presents a more permanent catalogue of lighting case studies.

With projects covering hospitality, residential, offices, retail and public spaces; First Light is a journey into the role lighting plays across the built environment.







6–21

**DoubleTree by Hilton**

22–39

**The Seed House**

40–53

**Raine Square**

54–63

**Portsea Hotel**

64–75

**Walan Apartments**

76–83

**Queensland Museum**

84–93

**Jackalope Hotel**

94–101

**DFO Perth**

102–109

**Junction Oval, VCCC**

110–115

**Brown St Residence**

116–121

**Melbourne Central**

122–127

**ARUP Office**

128–133

**Arthur & Co.**

134–137

**Masons Menswear**

138–145

**Project Index**

146–150

**Luminaire Index**





The Aeon Flex forms the defining visual feature of the exterior with dynamic lines of light painted across the sky.

Unios Luminaire: Aeon Flex Linear Light

# DoubleTree by Hilton

Perth, WA

Conrad Hilton bought his first hotel in 1919, now, the Hilton Hotel chain expands its footprint to 100 countries and territories around the world. In December 2018, the forward-thinking global leader of hospitality opened its doors to a 15-level, 206-guest room hotel on James Street, in Perth's vibrant Northbridge. With a unique design concept, Unios luminaires were able to adapt seamlessly to each internal and external application, providing an elegant visual consistency and functional solution to Northbridge's tallest building.

**Size**  
1666m<sup>2</sup>

**Date of Completion**  
December 2018

**Photographer**  
Richie Lu

**Architect**  
DesignInc

**Lighting Designer**  
Lumino Design

**Consulting Engineer**  
ARUP

**Builder**  
SKS Builders

**Electrical Contractor**  
PEAK Electrical

**Developer**  
SKS Group



DoubleTree by Hilton in Perth is the first of the renowned hotel brand in Western Australia and the first new-build DoubleTree by Hilton property in the country.



Right – The ground floor lobby combines functional illumination with contemporary interiors to deliver an inviting entrance to the hotel.  
*Unios Luminaires: Titanium Slotter Downlight, Onyx Spotlight*





DoubleTree by Hilton is an American hotel chain and a part of Hilton Worldwide. DoubleTree has been the fastest growing Hilton brand by a number of properties since 2007. With 500 branches in 40 different countries, DoubleTree boasts one of the most extensive networks of hotels in the world. The world's largest DoubleTree, a 1,094 room resort, opened in Orlando on International Drive in 2009 after a \$35 million renovation.

Left, Above & Right – The Onyx Spotlight provides general illumination while allowing for flexibility with its adjustable swivel to highlight features for the changing environment in the James St Bar + Kitchen. The Onyx was also custom made to allow for complete DALI control within the hotel.

*Unios Luminaires: Onyx Spotlight, Varano Slot Downlight, Luna Pin Spot Downlight, Eclipse Strip Light*







Above & Right – Eclipse Strip Light runs through hollow wooden shelves that act as a room divider to create contrast and comfortable illumination for diners.

*Unios Luminaires: Eclipse Strip Light, Varano Slot Downlight, Luna Pin Spot Downlight*

Renowned for their approachable style, the DoubleTree by Hilton in Northbridge design concept revolves around comfortable luxury and making guests feel content, and at home. The lighting solution for each space replicated this vision – emphasising warm, glossy timber finishes, rounded linear forms and polished surfaces.

The James St Bar + Kitchen is a modern take on a traditional pub that has a unique design solution that reflects the DoubleTree by Hilton brand philosophy. With clean lines, marble benchtops and an industrial chic feel, the lighting concept in the James St Bar + Kitchen creates a pleasant and welcoming experience. Strip lighting, Varano Slot Downlights and Luna Pin Spot Downlights work together to accentuate the warm, neutral colour scheme and mid-century furniture throughout the stunning dining space.

Lighting played an integral role in the mixing of social and private zones which cater to business travellers, families and the new wave of millennial commuters.



The venue consists of two separate spaces – a street fronting bar and a more private internal-facing dining room. The bar and the dining room have been designed with different lighting visions to suit their use. The bar features a moodier, focused lighting scheme while the dining room features a brighter, more uniform visual language.

The lighting concept for the dining room revolved around developing a continuous solid sheet of light across the ceiling. To accomplish this effect without any dotting, Eclipse Strip Light was carefully calibrated for optimal spacing and maximum light output. The result is a stunning sheet of light across the dining room ceiling.





Above & Right – To create an inviting and comfortable atmosphere in the Executive Lounge, an indirect use of Eclipse Strip in combination with Titanium Slotter Downlights was implemented.

*Unios Luminaires: Eclipse Strip Light, Titanium Slotter Downlight*

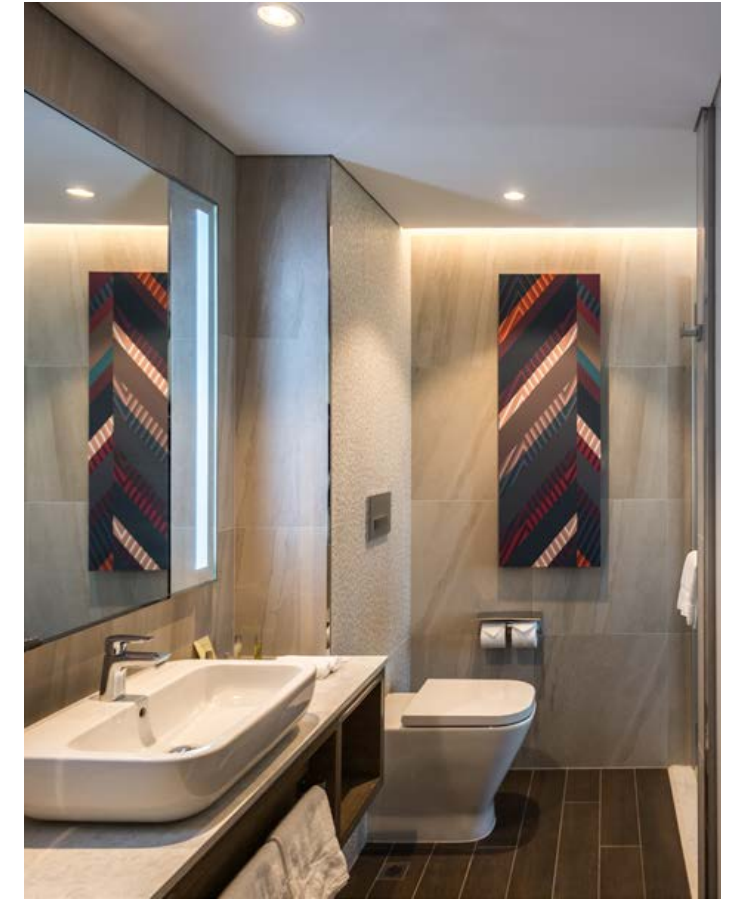






The Kinetic Surface Mounted Downlight provides a consistent lighting solution for the rooms over the 15-levels.

*Unios Luminaire: Kinetic Surface Mounted Downlight*



Top & Above – Evenly dispersed in line with the room entrances and within the bathroom, the Apex Downlight provides excellent general illumination.

*Unios Luminaire: Apex Downlight*









Left & Above – IP67 Eclipse Strip Light utilised throughout outdoor spaces for optimum performance and durability.

Unios Luminaires: Eclipse Strip Light, Apex Downlight, Emerald Spike Spotlight

With some of the best views of the Perth city skyline, the vision for the outdoor recreation facilities was based around being as unobstructive as possible to the views. The resulting solution comes to life with a series of metal arches, embedded with Eclipse Strip Light, solving the dilemma of maximising views, while providing general illumination to the outdoor area. Continuing on this theme, Eclipse Strip Light is discretely embedded into stairways and along the limestone surrounds of the pool.

#### Project Luminaire List

1. Aeon Flex Linear Light
2. Apex Downlight
3. Diamond Panel Light
4. Eclipse Strip Light
5. Emerald Spike Spotlight
6. Kinetic Surface Mounted Downlight
7. Latitude Canopy Light
8. Luna Pin Spot Downlight
9. Onyx Spotlight
10. Pilot Handrail Light
11. Ruby Cabinet Light
12. Titanium Semi Recessed Downlight
13. Titanium Slotter Downlight
14. Varano Slot Downlight
15. Vega Outdoor Light





# The Seed House

Sydney, NSW

After a careful design process which took over three years, The Seed House, also referred to as 'The Forever Home' came to fruition in Castlecrag, Sydney. Overlooking the steep bushland above Middle Harbour, the home runs a consistent theme of natural materials and incorporates the surroundings of stone, timber, steel and concrete into the build. With minimal direct lighting used throughout, the home utilised Unios linear luminaires to create a creative and indirect lighting concept.

<b>Internal Size</b> 650m <sup>2</sup>	<b>Lighting Designer</b> fitzpatrick+partners
<b>Date of Completion</b> December 2018	<b>Builder</b> David Campbell Building
<b>Photographer</b> Simon Whitbread John Gollings	<b>Electrical Contractor</b> All Clear Electrical
<b>Architect</b> fitzpatrick+partners	



The core intent behind this design was to create an adaptable and healthy home that could age gracefully while developing a patina of use. Purchased in 2007, James Fitzpatrick saw great potential in the land, as rocky outcrops and Angophora trees enclosed it, this abundance of nature inspired the design to connect the outdoors with the indoor spaces.







Unique in every sense of the word; the home uses no plasterboard, nor traditional paint systems. Every material and finish has been carefully selected for its environmental performance - with sustainability being a critical component to this build and considered in each stage.

This healthy home is environmentally responsive with an intent to last a long time. The lighting design called for careful consideration of illumination through comfort, the shaping of space and invited an alternative concept which challenged the standard practice of predominantly direct lighting in a residence. The home instead, utilised indirect lighting as a source throughout which playfully bounced off walls and ceilings - placed in response to tasks undertaken in each space.

The Eclipse Strip Light runs along firm structures and interjects with the architecture to create a diffused, overall ambient light source. In a unique concept, the strip is housed into the concrete and runs underneath the stone stair treads to illuminate from below and provide a fitting, guiding light for the residents.

Left & Above – A clever use of Eclipse Strip Light helps define the multiple levels.

*Unios Luminaire: Eclipse Strip Light*





Above & Right – A great example of indirect lighting remaining unobtrusive to maximise the stunning views of the bushland of Middle Harbour.

*Unios Luminaires: Eclipse Strip Light, Titanium Downlight*







The forever home utilised a substantial amount of timber as structural columns, floorboards, walls and doors in the house.

The consistent flow of Huon Pine, Celery Top Pine, Radiata Pine and Blackwood meant that a colour temperature of 3000K was employed to pay homage to the rich textures and natural tones of these architectural elements. Proof that responsible and carefully curated indirect lighting is of increasing prominence - The Seed House proves there is always unique and innovative ways to create light within a home while employing comfortability and functionality.



Left – For task areas, the use of an LX S62 Linear Light provides an excellent example of direct and indirect lighting.  
Unios Luminaires: LX S62 Linear Light, Eclipse Strip Light





Above – The custom spiral staircase is a one of a kind design – with the structure completely fabricated out of wood.

*Unios Luminaire: Aeon Flex Linear Light*

Right – Celery Top Pine played a crucial role in creating structural elements throughout the home, acting as floorboards, wall linings and was the most dominant timber of all.

*Unios Luminaires: Eclipse Strip Light, Titanium G2 Downlight*



## fitzpatrick + partners

Since forming in 2011, fitzpatrick+partners has become one of Australia's leading commercial and entertainment architectural design studios. With careful consideration, fitzpatrick+partners enhance the human architectural experience through light, thermal comfort, the shaping of spaces, and enjoyment of the outside connection.



Above – Playing with the perception of space, the Spectrum Spike Light presents its modern minimalist profile from above.

*Unios Luminaire: Spectrum Spike Light*



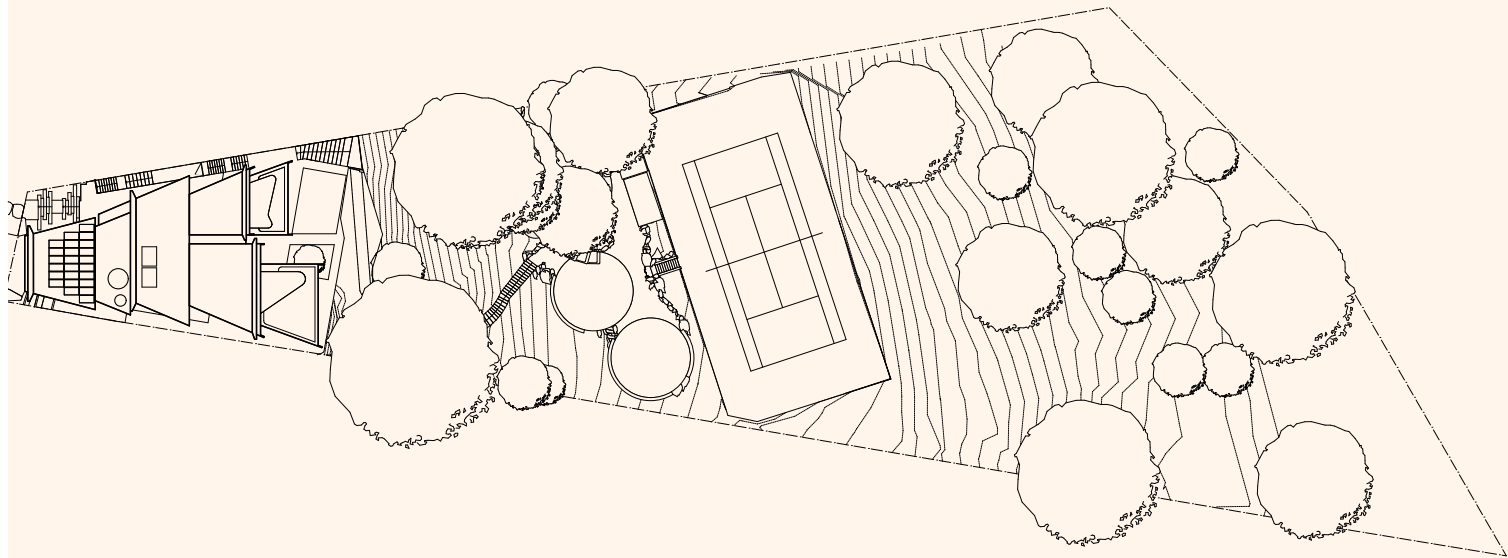




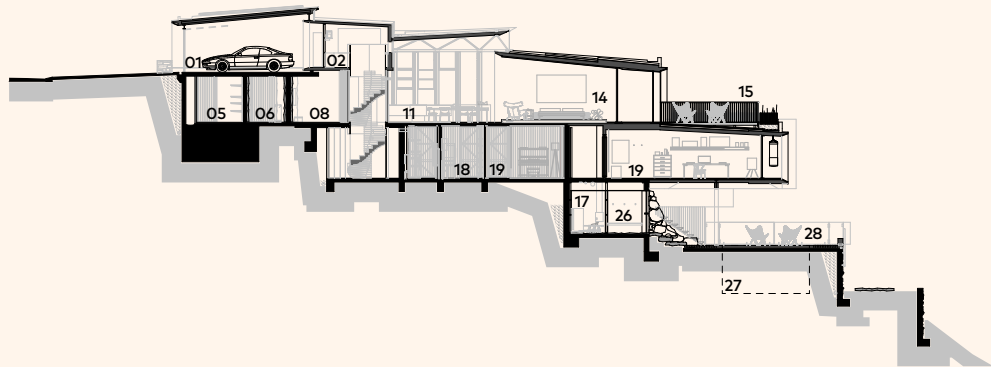
With everything carefully selected to create functional and durable beauty, the home responds to its surroundings and has longevity in its DNA. Encompassing a contemporary design that relates to a simple way of life, this forever home certainly has a journey of its own.

Project Luminaire List

- 1. Aeon Flex Linear Light
- 2. Akira Ceiling Light
- 3. Apex Surface Mounted Downlight
- 4. Axis Surface Mounted Downlight
- 5. Cluster Inground Uplight
- 6. Eclipse Strip Light
- 7. LX S62 Linear Light
- 8. Shift Out Downlight
- 9. Spectrum Spike Light
- 10. Titanium G2 Downlight



Site Plan  
1:800



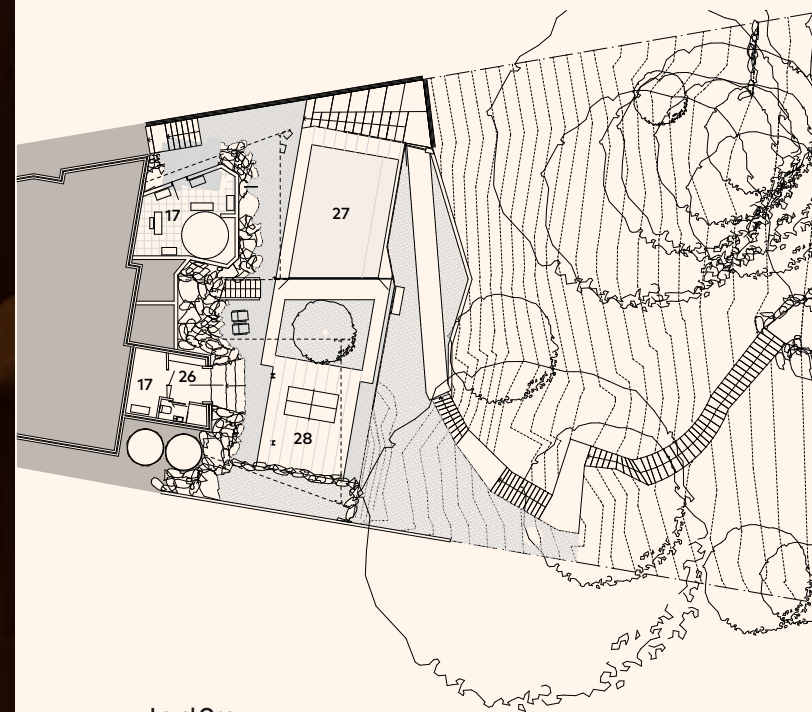
Elevation  
1:400



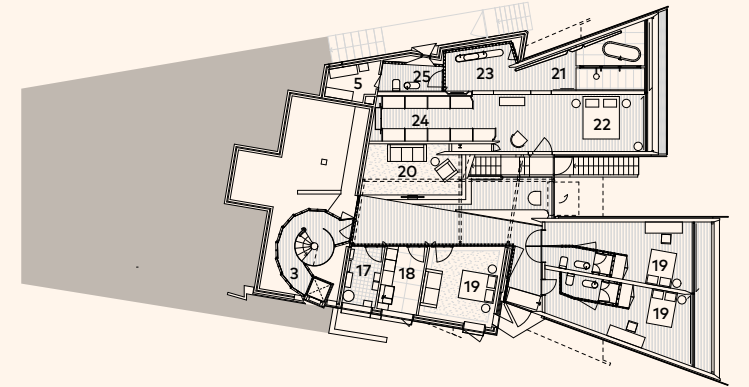


Titanium G2 Downlight creating highly functional illumination for the amenity areas in The Seed House.

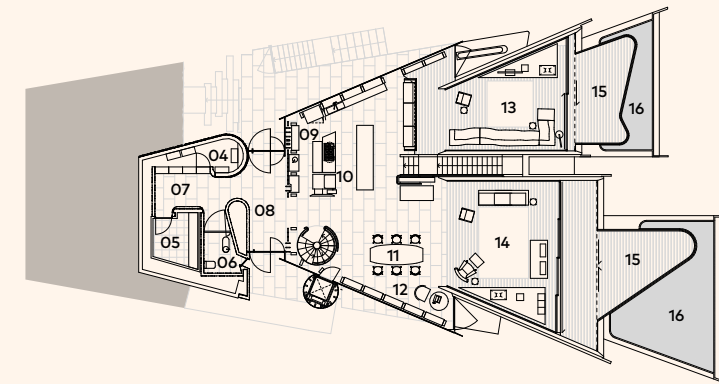
Unios Luminaires: Titanium G2 Downlight



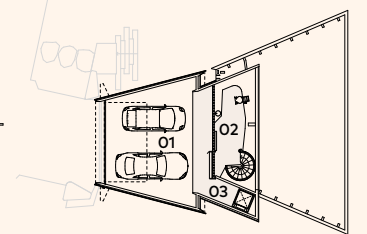
Level One  
Floor Plan



Level Two  
Floor Plan

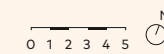


Level Three  
Floor Plan



Level Four  
Floor Plan

Scale  
1:400



- |                        |                  |                    |
|------------------------|------------------|--------------------|
| 1. Garage              | 11. Dining       | 21. Bath House     |
| 2. Study               | 12. Library      | 22. Master Bedroom |
| 3. Lift Lobby          | 13. Family Room  | 23. Vanity         |
| 4. Electrical / Comms. | 14. Lounge       | 24. Robe           |
| 5. Store               | 15. Open Terrace | 25. WC             |
| 6. Guest Ensuite       | 16. Roof Garden  | 26. Changeroom     |
| 7. Coat Locker         | 17. Plant Room   | 27. Pool           |
| 8. Entry Hall          | 18. Laundry      | 28. Outdoor Living |
| 9. Butlers Kitchen     | 19. Bedroom      |                    |
| 10. Kitchen            | 20. AV Space     |                    |





# Raine Square

Perth, WA

Heritage is at the core of Raine Square, which is connected by three historical buildings that pay homage to the original architecture from 1882. The redevelopment of the iconic site meant that 18,000 square metres would transform the space into a spectacular entertainment and retail precinct. A holistic lighting solution was developed to integrate with architectural elements to form an iconic destination in the heart of the city.

<b>Lighting Supplied by</b> Monduluce	<b>Architect</b> Taylor Robinson Chaney Broderick and Cox Architecture
<b>Size</b> 18,000m <sup>2</sup>	<b>Consulting Engineer</b> Floth
<b>Date of Completion</b> December 2018	<b>Builder</b> Built
<b>Photographer</b> Richie Lu	<b>Electrical Contractor</b> Everett-Smith
<b>Landscape Architect</b> REALMstudios	





Above & Right – The Eclipse Strip Light placed discretely throughout wooden slats to playfully balance light and shadow. Allowing for complete design flexibility throughout the space, Eclipse extrusions take the custom design to a new level.

*Unios Luminaire: Eclipse Strip Light*

Honouring and celebrating some of the most meaningful and spectacular original architecture of Perth; this \$200 million redevelopment blended the history of the city with exceptional contemporary design.







Left & Above – The Marc Wall Light has been deployed in a 3000K colour temperature to complement the warm tones of the perforated panels.

Unios Luminaire: Marc Wall Light



Above – The Eclipse Strip Light brings context, shape and dimension to the feature ceiling.

Unios Luminaire: Eclipse Strip Light



Raine Square is bordered by Murray Street, William Street and Wellington Street and is named after Mary Raine, an entrepreneur and philanthropist who shaped Perth City in the 1920s. The square was initially formed as a pedestrian way, surrounded by hotels bought by the University of Western Australia in the 1960s. These hotels included the well-known Wentworth and Royal Hotel, which were both previously owned by Mary Raine. Officially opening in 1986, Raine Square has maintained some of the heritage properties that surrounded the original square.

A combination of luminaires were sourced from all parts of the world to honour both new and old architectural features in the redeveloped Perth precinct. Lighting formed a crucial element to the overall design vision, carefully intertwined throughout feature ceilings across the complex. The central design element of custom, curved, wooden slats in the ceiling act as both a wayfinding element and a design hallmark.

Perforated panels meet the Marc Wall Light, as the trio of luminaires work to raise the presence of the elevator. The adjustable blade design in a textured black finish serves to create a point of difference on textured walls that frame the elevator, while washing the panelling with soft illumination.





Left, Above & Right – Strip light working in unison with the feature wood ceiling for a striking effect.

*Unios Luminaire: Eclipse Strip Light*

Continuing on the theme of the integration between feature wood elements and light; this same concept defines the central escalator system. The escalators are positioned in the centre of the interior and act as a focal point over the three levels of the building. On the underside of each of the escalators are a series of linear wooden panels in combination with an asymmetrical array of strip lighting.

The use of Eclipse Strip Light across the wooden slats draws attention to the design feature as well as acting as an indicator of pathways throughout the building. The strip lighting is recessed deep into the slats to minimise glare and create optimum comfort for diners and pedestrians.







Far Left, Left and Below – The Aeon Flex Linear Light lines concrete structures from beneath to create a safe and inviting outdoor environment in the William Street laneway.  
*Unios Luminaire: Aeon Flex Linear Light*











Left & Right – The Aeon Flex Linear Light ensures the picturesque golden facade is visible throughout the night.

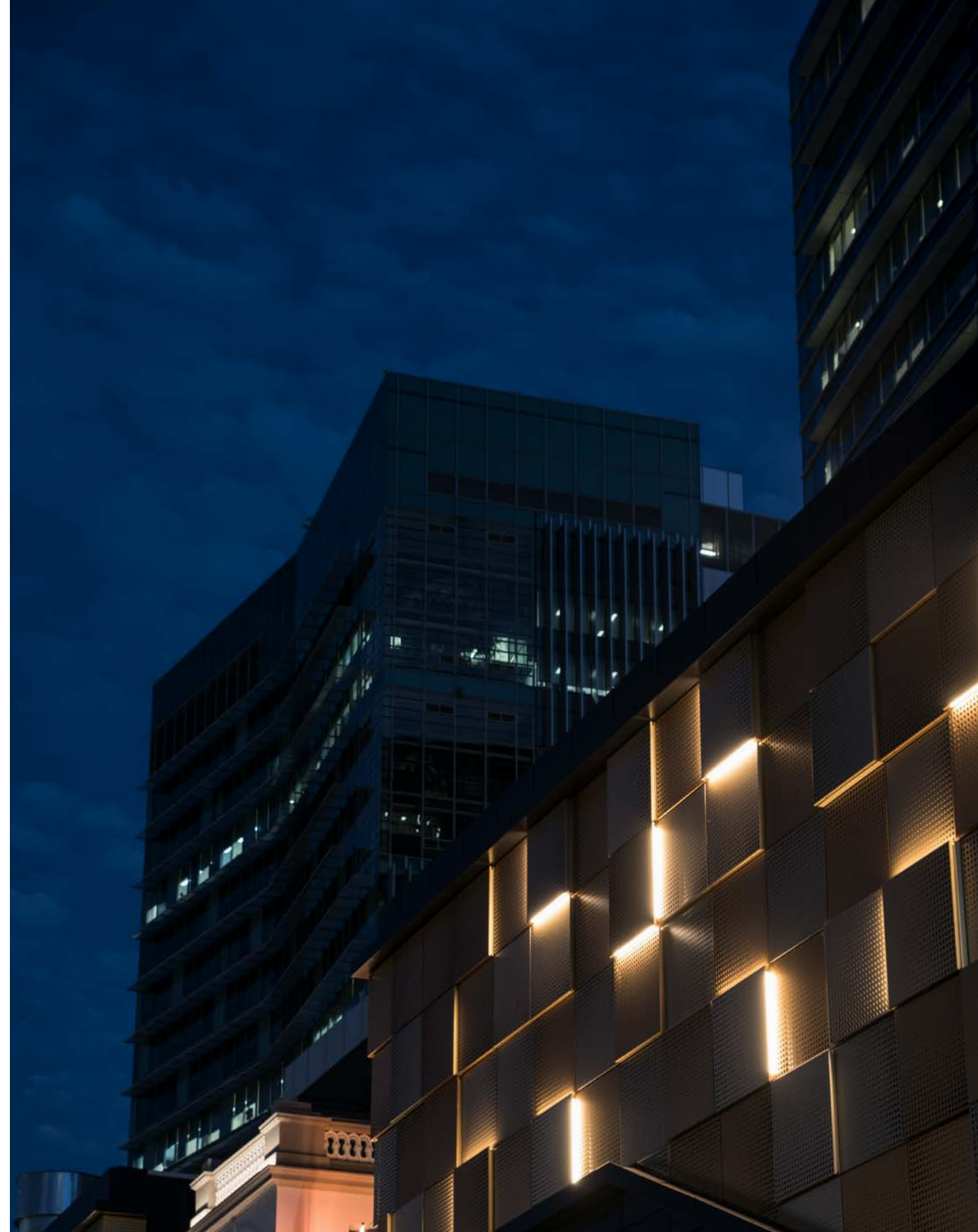
*Unios Luminaire: Aeon Flex Linear Light*

#### Project Luminaire List

1. Aeon Flex Linear Light
2. Eclipse Strip Light
3. Marc Wall Light

The redevelopment of Raine Square required significant engagement and collaboration between the City of Perth and the Heritage Council. With restorations made to the historical Royal Hotel, Glyde Chambers and Wentworth, the buildings have been revived as part of the redevelopment and returned to their former glory. The lighting design for the redevelopment commended the old and endorsed the new.

The solution fused the years that had passed at Raine Square; remained contemporary, functional and met the design vision of each architectural element. The Aeon Flex rests vertically and horizontally across golden square panels to bring shape and context to the site's street frontages at night. While emitting warm light that accentuates the golden tones of the square panels, the Aeon Flex also works to reinforce the Raine Square brand identity.





# Portsea Hotel

Melbourne, VIC

The picturesque Portsea Hotel is located on the Port Phillip Bay Coastline along the Mornington Peninsula. Established in 1876, the newly renovated Portsea Hotel is an iconic landmark in southern Victoria's most prestigious seaside township. The \$7 million transformation of the historical pub stayed sympathetic to the building's past - retaining original tiles and artwork from the old watering hole. Diverse lighting capabilities were required for this newly renovated hotel with a variety of Unios luminaires providing a comprehensive solution.

**Lighting Supplied by**  
Lights & Tracks

**Size**  
1525m<sup>2</sup>

**Date of Completion**  
December 2018

**Photographer**  
Alessandro Cerutti

**Architect and Interiors**  
Dubois:

**Project Manager**  
Directitude  
Management

**Builder**  
Baxter Projects

**Electrical Contractor**  
Tung Electrical

**Developer**  
Colonial Leisure Group





The brief was clear – to re-energise the iconic pub which the public had a deep connection with. This meant creating a unique space for all demographics that would enhance the stunning setting along Port Phillip Bay – known for its waterfront beer garden and sweeping bay views.

#### Project Luminaire List

1. Apex Adjustable Downlight
2. Apex Dusk Downlight
3. Axis Surface Mounted Downlight
4. Cluster Inground Uplight
5. Eclipse Strip Light
6. Kobe Track Light
7. MX Track
8. Orbit Wall Light
9. Radius Pathway Light
10. Switch Downlight
11. Titanium Dusk Downlight
12. Titanium Starlight

The Axis Surface Mounted Downlight washing white textured walls upon entrance at the Portsea Hotel.

Unios Luminaire: Axis Surface Mounted Downlight





Above – The Orbit Wall Light sits flawlessly on timber wall panelling to provide wayfinding illumination, acting as a perimeter light.  
*Unios Luminaire: Orbit Wall Light*



Above & Right – The Switch Downlight pays tribute to a rotating art gallery featuring an evolving calendar of artists at the Portsea Hotel.  
*Unios Luminaire: Switch Downlight*







The Kobe Track Light adds an elegant touch with a harmony of texture and finish to the front desk at the Portsea Hotel.

Unios Luminaires: Kobe Track Light, MX Track



James Ford arrived at Portsea in the early 1840s and is considered to have named the place after Portsea in Portsmouth, England. He was a local entrepreneur, who built the first Portsea pier (c1860) and the first Portsea hotel (c1870). As one of the holiday hotels of the area, the Portsea Hotel was cherished in an era before holiday apartments, when all-in tariffs were economical and a usual means of taking accommodation by the sea.

With such a long and cherished history, the lighting solution for the restoration of the Portsea Hotel needed to respect the historic charm of the establishment in addition to modernising the new facilities. As the main tourist attraction of the small village of Portsea, the redevelopment of the Portsea Hotel was crucial to overall tourism for the township.

Although the main entrance of the hotel has remained mostly unchanged over the years, lighting technology has certainly changed dramatically over this time. In this most recent redevelopment, the lighting seeks to breathe new life into the historic walls of the building. Every original texture and surface is respected and cherished for its historical relevance to Portsea.





Left, Above & Right – The refurbishment brought back charm to the Portsea icon, with a vision to re-establish the venue as a tourist destination to be enjoyed for 365 days of the year.

*Unios Luminaires: Eclipse Strip Light, Radius Pathway Light*

The lighting design called for a careful collaboration between Lights & Tracks and architect and interior designer, Dubois. With an emphasis on balancing comfortable illumination for guests, while delivering functionality and precision, each section for the hotel provided diverse capabilities. The key to this successful lighting outcome was by creating adaptable warm spaces with Dusk technology, allowing for the adjustment of colour temperatures between 2000-3000K. As one of Victoria's largest beer gardens the design needed a sufficient amount of lighting while limiting glare for guests.

Specifying luminaires in 2700K; the lighting designed by Dubois and Lights & Tracks sought to create the most inviting of atmospheres for the outdoor space. The exterior luminaires played every part in bringing the beer garden to life, as a variety of Unios products spread elegantly throughout the outdoors. Specified with coastal conditions in mind, these luminaires played a vital role not only to look aesthetically pleasing but remain durable and resilient in the harsh coastal environment along the Mornington Peninsula.





# Walan Apartments

Brisbane, QLD

With the design intent to build 'houses in the sky', Walan Apartments is a modern take on the traditional Queenslander home. Located at Kangaroo Point, the building has been designed with an east facing 'vertical forest' and a floorplate that mimics the size of a house with a natural connection to the outside. The lighting solution was designed to complement the unique design attributes of the building with a level of sophistication and practicality.

**Lighting Supplied by**  
Lights & Tracks

**Size**  
4520m<sup>2</sup>

**Date of Completion**  
December 2018

**Photographer**  
Angus Martin

**Architect**  
bureau^proberts

**Lighting Engineer**  
Illumination Design  
Australia

**Lighting Designer**  
Illumination Design  
Australia

**Builder**  
Hutchinson Builders

**Electrical Contractor**  
Kee Services

**Developer**  
GBW Developments





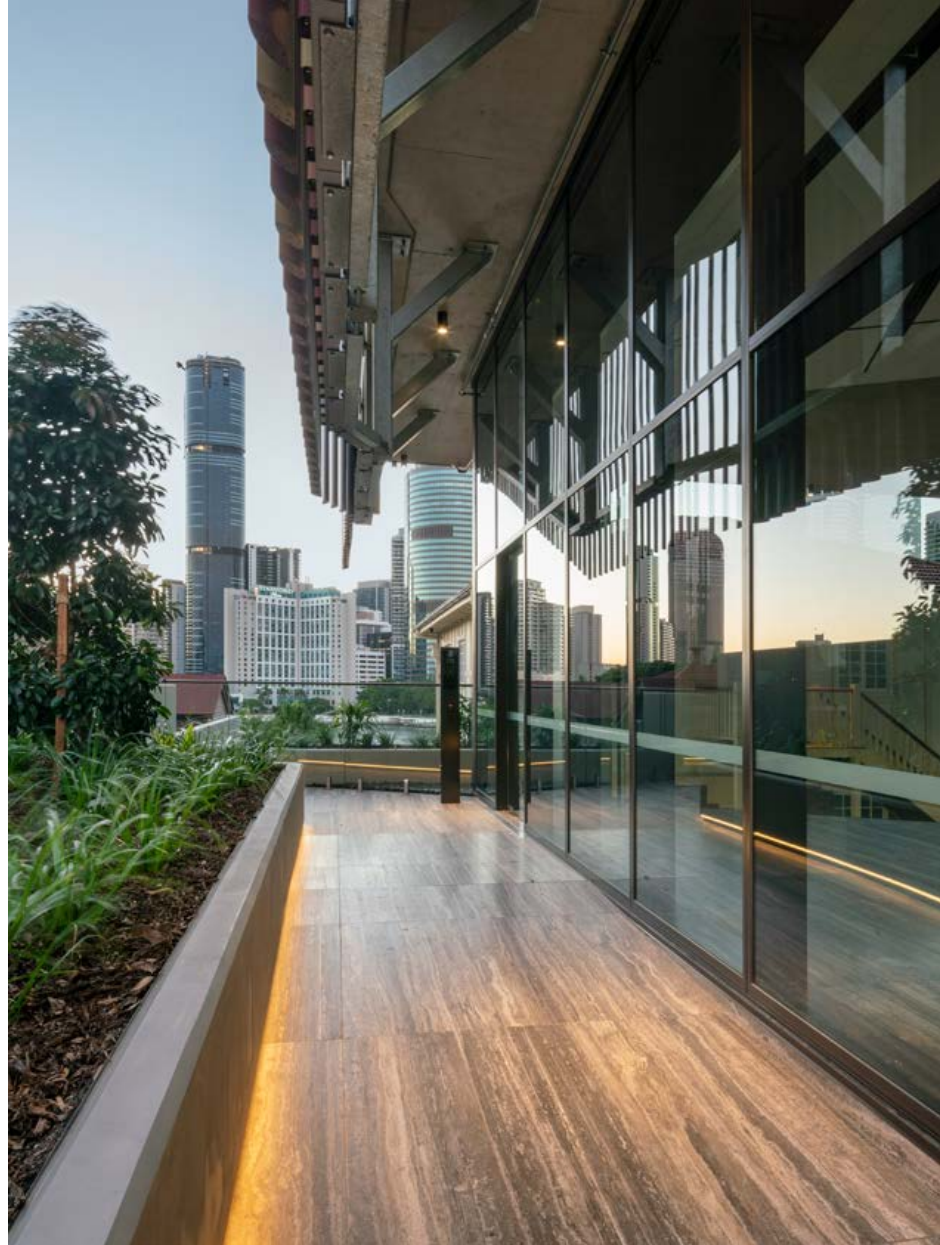


The unique facade articulation and colours were designed to reflect that of the Kangaroo Point cliffs. The design intent – to build a perfect relationship between the apartments and the external environment so that the 14-storey residential development would conform effortlessly to the river's edge.

#### Project Luminaire List

1. Aeon Flex Linear Light
2. Athena Surface Mounted Downlight
3. Eclipse Strip Light
4. Emerald Spike Spotlight
5. Kobe Track Light
6. LX S62 Linear Light
7. MX Track
8. Titanium G2 Downlight





Above – Eclipse Strip Light and Athena Surface Mounted Downlights run on the outskirts of the apartment building to shape the exterior.  
*Unios Luminaires: Eclipse Strip Light, Athena Surface Mounted Downlight*







A striking linear feature, the LX S62 is lined across the ceiling to create practical lighting throughout lift lobbies and to accentuate the jagged feature walls.

Unios Luminaire: LX S62 Linear Light



Above – The Athena Surface Mounted Downlight and Kobe Track Light work in unison to provide lighting across the indoor and outdoor spaces.

Unios Luminaires: Athena Surface Mounted Downlight, Kobe Track Light, MX Track

The careful balance of a simple, practical and refined lighting scheme was made possible through a variety of Unios luminaires, which achieved the high quality expected from the apartments while satisfying budget requirements. The solution from each luminaire was to connect the outdoors within, as open-plan living spaces take advantage of the panoramic views.

A fundamental pillar to the success of the lighting design was the integration between light and the architecture.

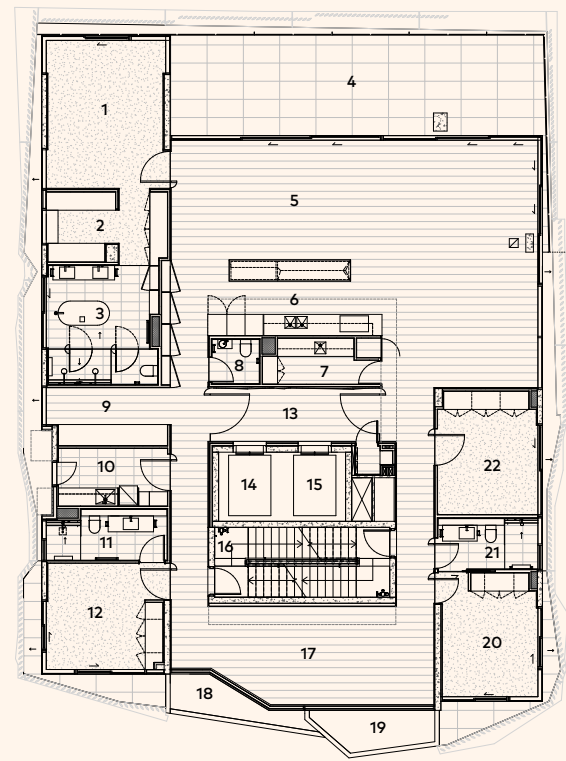
The lighting required flexibility and an ability to adapt effortlessly to its surroundings – no matter what the occasion.

A highlight of the lighting design is the elaborate incorporation of Aeon Flex across the exterior facade on each level which highlights the mix of dusty reds, browns and yellows, that create a pattern of gradients across the tower's elevations. The resulting effect is a perfect example of light and architecture working in cohesion.









Scale  
1:250

- |                   |                |
|-------------------|----------------|
| 1. Master Bed     | 12. Bed 2      |
| 2. Master Robe    | 13. Lobby      |
| 3. Master Ensuite | 14. Lift 1     |
| 4. Balcony        | 15. Lift 2     |
| 5. Dining         | 16. Stairwell  |
| 6. Kitchen        | 17. Media Room |
| 7. Butlers Pantry | 18. Planter 1  |
| 8. Powder Room    | 19. Planter 2  |
| 9. Study          | 20. Bed 3      |
| 10. Laundry       | 21. Bath 2     |
| 11. Bath 1        | 22. Bed 4      |

To further emphasise the notion of 'home', in the 14-storey apartment building, each residence has a unique, pocket garden reminiscent of a more suburban garden. Breaking the mould of apartment builds within the last decade, Walan represents a new era of design by blending the purpose of apartment living while encompassing the benefits of a home.

Luminaires in each penthouse apartment were selected to flow with the minimal interior design while delivering appropriate illumination levels throughout.

Right – The Titanium G2 Downlight accentuates the interior colours which were designed to reflect the Kangaroo Point cliffs and its natural surroundings.

Unios Luminaire: Titanium G2 Downlight

The lighting design worked to complement the overall architectural design and interior appointments which further provide a luxury aesthetic that is second to none. Exceeding expectations, Walan Apartments is the first of its kind in Australia, embedded in the landscape of Kangaroo Point.





# Queensland Museum

Brisbane, QLD

Home to permanent and changing exhibitions and collections, the Queensland Museum is the state's hub for natural history, cultural heritage and science. Queensland Museum partnered with London's Science Museum Group to deliver the multi-million-dollar Sciencentre refurbishment, with the organisations collaborating to deliver a world-class exhibiton showcasing cutting-edge interactive STEM (science, technology, engineering and maths) engagement.

**Lighting Supplied by**  
Raylinc

**Size**  
7262m<sup>2</sup>

**Date of Completion**  
September 2018

**Photographer**  
Angus Martin

**Architect and Interiors**  
Architectus

**Lighting Designer**  
ARUP

**Consulting Engineer**  
ARUP

**Head Contractor**  
Intrec

**Electrical Contractor**  
Ryan Wilks

**Developer**  
Queensland Museum







As several of the exhibits at Queensland Museum's SparkLab, Sciencentre revolve around interaction and perception, the use of Unios luminaires was critical in conveying how light plays a vital role in the way we observe and make sense of the world around us.

Project Luminaire List

1. Eclipse Strip Light
2. Eclipse Strip Light RGBW

All luminaires in the Sparklab are DALI dimmable and integrated into the existing museum lighting system.

*Unios Luminaire: Eclipse Strip Light*





Eclipse Strip Light shining through pre-cut holes in MDF panels to represent constellations in the night sky.

*Unios Luminaire: Eclipse Strip Light*



Queensland Museum was founded by the Queensland Philosophical Society on 20 January 1862. Queensland Museum moved to the Queensland Cultural Centre at South Bank in 1986, where the museum currently resides. In 2012, the museum celebrated 150 years of connecting visitors to Queensland, its people and their stories of the past, present and future.

The Eclipse Strip Light was utilised in multiple rooms throughout the exhibit space. To see colour; RGBW strip was installed behind opaque walls and concealed in the ceiling to fill the space with coloured light. Within the Spinning Earth exhibit, the Eclipse was installed behind black MDF panels, this application projected light through pre-cut holes in the panels, which gave the appearance of stars in the night sky. The holes were configured to show the location of key constellations in space.

The Eclipse Strip Light also works within the exhibition to provide a subtle glow and ambience to the overall environment. The holistic design, which includes the effective use of lighting, not only adds to the ambience, look and feel of the exhibition but also enables visitors to interact with displays. This is where they can explore how their sense of sight and the science of light helps them question, test and discover how they perceive the world around them. The lighting design vision was to seamlessly integrate the intelligent use of lighting within exhibits. One of the key phenomena the exhibition aimed to explore with visitors was light and how different forms of light are perceived.





Above & Right – As well as using red, green and blue, the RGBW Eclipse Strip Light also uses a white chip. The dedicated white chip provides a cleaning and maintenance mode out of hours.

Unios Luminaire: Eclipse Strip Light (RGBW)



### Seeing colour

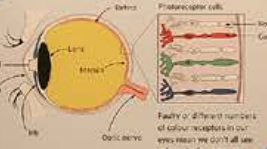
Why do the objects appear to change colour under different coloured lights?



An object appears to be a certain colour because it's reflecting that colour light into our eyes.

White light is made up of all the colours of the rainbow. A blue object appears blue because when white light hits it, it's reflecting the blue light and absorbing all the other colours of light.

When red light hits a blue object, all the red light is absorbed. There is no blue light to be reflected and the object appears black.



Explore More  
Visible light spectrum | seeing colour | cones and rods





# Jackalope Hotel

Melbourne, VIC

**Lighting Supplied by**  
Lights & Tracks

**Size**  
5,200m<sup>2</sup>

**Date of Completion**  
April 2017

**Photographer**  
Alessandro Cerutti

**Architect**  
Carr

**Interior Designer**  
Carr

**Project Manager**  
Medley Group

**Consulting Engineer**  
Wood & Grieve  
Engineers

**Builder**  
VCON

**Developer**  
Louis Li



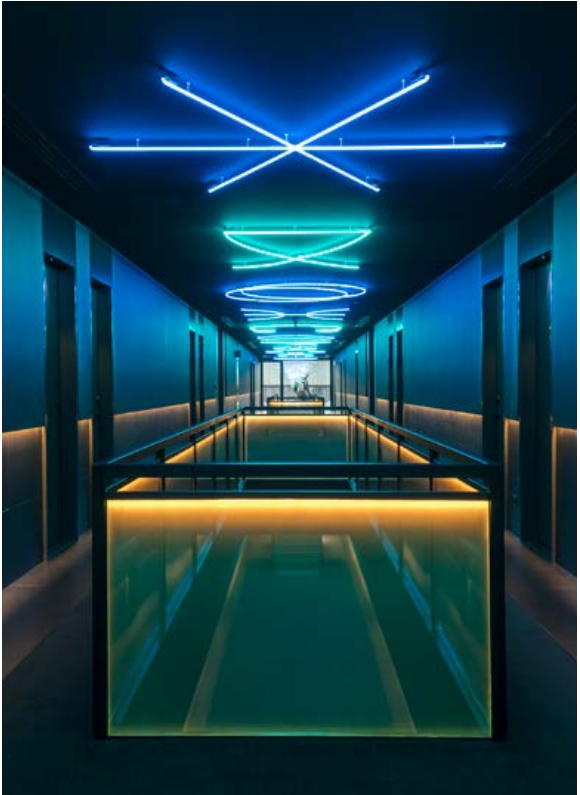
In one of the most daring and forward-thinking moves in the hotel industry to date, Carr brought Jackalope to life with stunning geometric forms that reflect the design ethos and culture of the people who live and visit the Mornington Peninsula. Recognised as 'Australia's Hotel of the Year' in 2017, lighting played an integral role in this modern hotel design, which came in the purest of forms and represented a new breed of brave and experiential architecture.

#### Project Luminaire List

1. Apex Adjustable Downlight
2. Axis Surface Mounted Downlight
3. Cuadro Wall Light
4. Eclipse Strip Light
5. Emerald Spike Spotlight
6. Moonstone Wall Light
7. Titanium G2 Downlight
8. Titanium Starlight
9. Zenith Wall Light







Left & Above – The Eclipse Strip Light provides an otherworldly experience, rich with narrative and imagination as it transports guests away with a fusion of art and design.  
*Unios Luminaires: Eclipse Strip Light, Titanium Starlight*



Above – True to its name, Jackalope merges fantasy and reality, with the assistance of innovative and creative architectural lighting.  
*Unios Luminaire: Eclipse Strip Light*









Above – The Cuadro Wall Light creating wayfinding illumination for guests at the Jackalope Hotel.

*Unios Luminaires: Cuadro Wall Light, Emerald Spike Spotlight*



The Axis Surface Mounted Downlight sits seamlessly in a recess of the ceiling to provide focused illumination from above in Doot Doot Doot.

*Unios luminaire: Axis Surface Mounted Downlight*



# DFO

Perth, WA

**Lighting Supplied by**  
Monduluce

**Size**  
24,000m<sup>2</sup>

**Date of Completion**  
October 2018

**Photographer**  
Richie Lu

**Architect**  
Taylor Robinson  
Chaney Broderick

**Consulting Engineer**  
Wood & Grieve  
Engineers

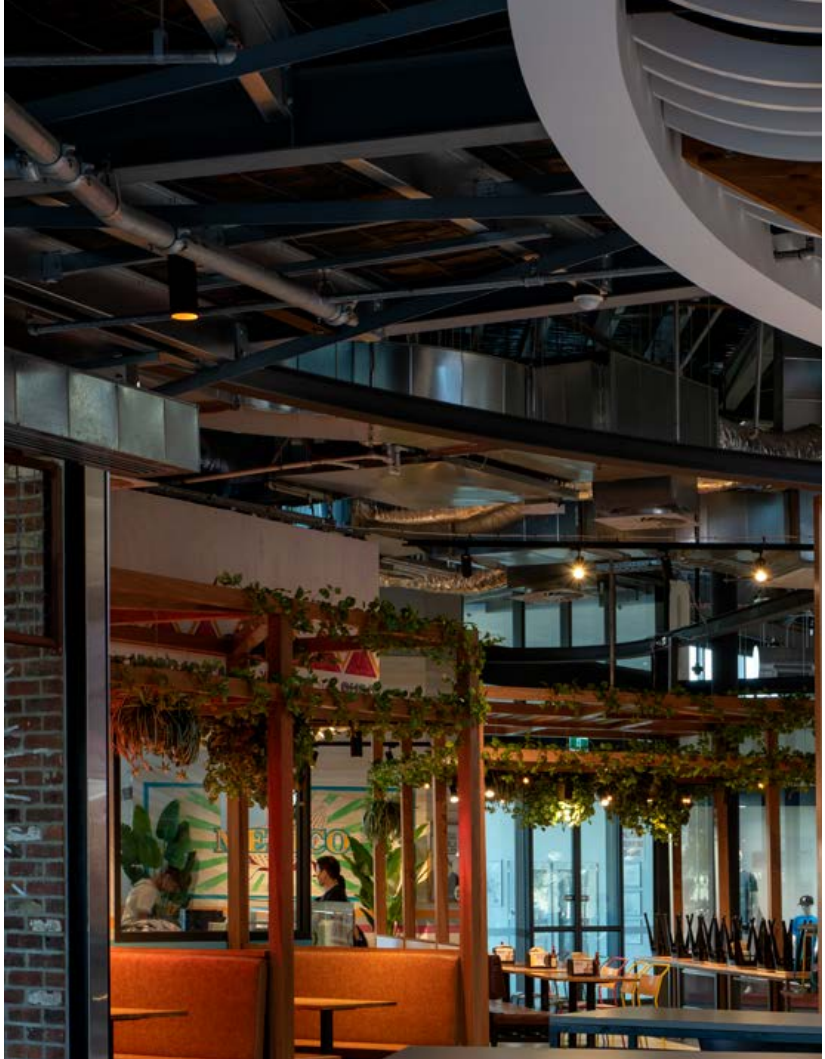
**Builder**  
Georgiou Group

**Electrical Contractor**  
Everett-Smith

**Developer**  
Vicinity Centres and  
Perth Airport







Left & Above – Titanium Surface Mounted Downlights have been used throughout the food court areas to create a cozy atmosphere, complementing the industrial architectural design.  
*Unios Luminaires: Titanium Surface Mounted Downlight, Kobe Track Light, MX Track, Switch Downlight*

Project Luminaire List

1. Aeon Flex Linear Light
2. Apex Downlight
3. Helix Wall Light
4. Kobe Track Light
5. MX Track
6. Switch Downlight
7. Titanium G2 Downlight
8. Titanium Slotter Downlight
9. Titanium Surface Mounted Downlight



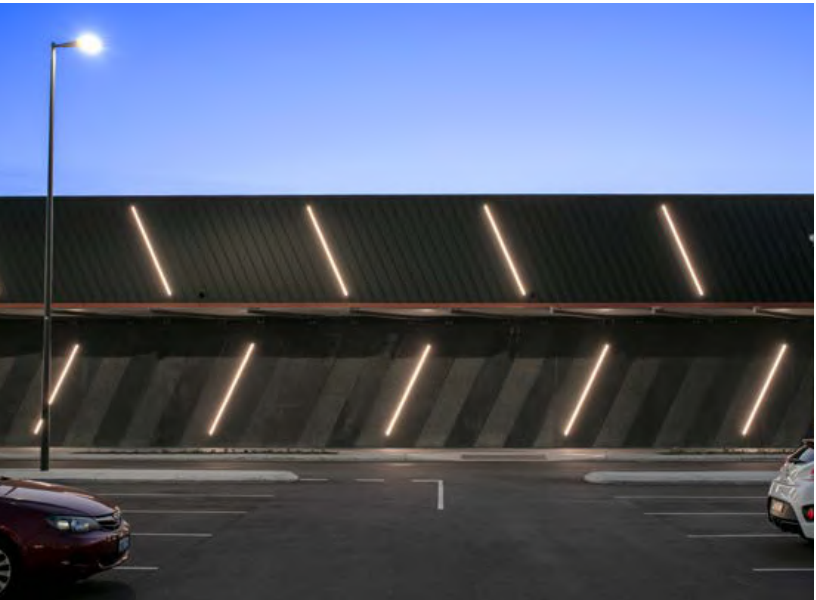


Top & Above – The Helix Wall Light maximising adjustability while maintaining a slim profile to gel with the DFO Perth bathroom scheme.  
*Unios Luminaires: Helix Wall Light, Titanium Surface Mounted Downlight*



The Titanium Surface Mounted Downlight and Titanium Slotter Downlight is carefully weaved throughout the exposed mesh ceiling structure.  
*Unios Luminaires: Titanium Surface Mounted Downlight, Titanium Slotter Downlight*





Left & Above – The Aeon Flex Linear Light applied to the exterior of DFO to create a dynamic architectural feature.

*Unios Luminaire: Aeon Flex Linear Light*



Above – The \$150 million project, constructed over 15 months, is Western Australia's first DFO outlet centre and the sixth nationwide.





# Junction Oval, VCCC

Melbourne, VIC

**Lighting Supplied by**  
Lights & Tracks

**Date of Completion**  
April 2018

**Photographer**  
Alessandro Cerutti  
Jack Lovel

**Architect**  
Cox Architecture

**Consulting Engineer**  
ARUP

**Builder**  
Cockram Construction

**Electrical Contractor**  
Nuvo Group

**Developer**  
Victorian Government  
and Cricket Australia



Exterior lighting was the hero behind the \$40 million redevelopment at the historic Junction Oval. It was critical to respect the oval's esteemed past and accentuate the newly built main building and historic Blackie-Ironmonger stand, which were all integral elements of the project.

Project Luminaire List

1. Diamond Floodlight
2. Eclipse Strip Light
3. Genesis Slotter Light
4. Vortex Highbay
5. Zeron Mini Fixed Two Wall Light





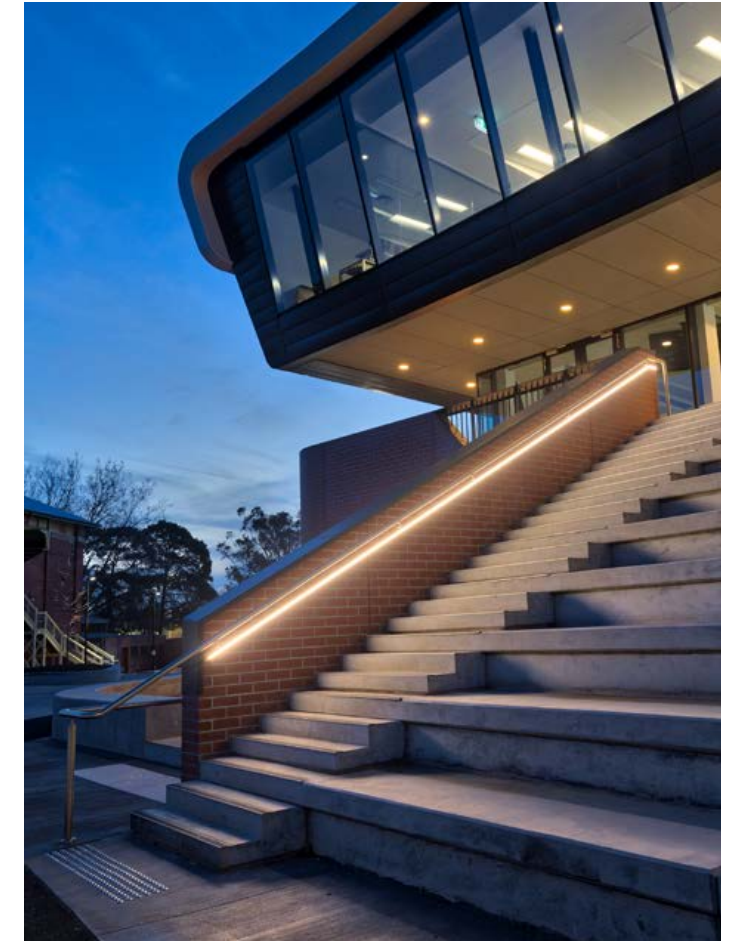






Clever architectural design in combination with the Zeron Mini Fixed Two Wall Light creates a striking, vertical illumination effect across the facade of Junction Oval.

Unios Luminaire: Zeron Mini Fixed Two Wall Light



Top & Above - The Eclipse Strip Light sits effortlessly beneath the handrail to add a guiding light externally while interior functions spaces utilise the Genesis Slotter Light, providing maximum output and practicality.

Unios Luminaires: Eclipse Strip Light, Genesis Slotter Light



# Brown St Residence

Sydney, NSW

**Size**  
200m<sup>2</sup>

**Date of Completion**  
January 2019

**Photographer**  
Simon Whitbread

**Architect**  
Rod Pindar and  
Natalie Sciberras

**Consulting Engineer**  
Taylor Thomson  
Whitting

**Builder**  
Rod Pindar and  
Natalie Sciberras

**Electrical Contractor**  
Bright Light Electrical







Far Left & Above – Creating warm tones from within, the collection of Unios luminaires for this Brown Street residence provide a perfect contrast to the industrial theme and dark exterior.

*Unios Luminaires: Titanium Dusk Downlight, Eclipse Strip Light, Onyx Wall Light, Emerald Spike Spotlight*





Left, Below & Right – Exposed materials are brought to life in this Brown Street residence kitchen with Switch Downlights. The Axis Surface Mounted Downlight works to accentuate concrete floors, exposed brick and wooden slats in corridors.

*Unios Luminaires: Switch Downlight, Axis Surface Mounted Downlight, Eclipse Strip Light*

Project Luminaire List

1. Apex Downlight
2. Axis Surface Mounted Downlight
3. Cuadro Wall Light
4. Eclipse Strip Light
5. Emerald Spike Spotlight
6. Onyx Wall Light
7. Switch Downlight
8. Titanium G2 Downlight
9. Titanium Dusk Downlight
10. Titanium Starlight
11. Vespa Wall Light







# Melbourne Central

Melbourne, VIC

**Lighting Supplied by**  
Lights & Tracks

**Size**  
55,100m<sup>2</sup>

**Date of Completion**  
September 2018

**Photographer**  
Alessandro Cerutti

**Architect**  
Kennedy Nolan

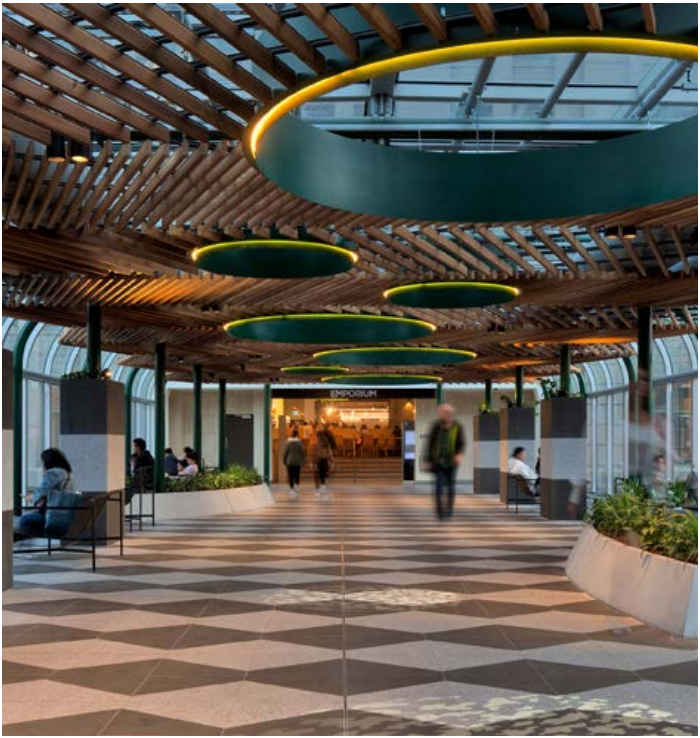
**Consulting Engineer**  
ADP Consulting

**Builder**  
Otto Construction  
Group

**Developer**  
GPT Group

**Electrical Contractor**  
Lowe Electrical





Project Luminaire List

1. Aeon Flex Linear Light
2. Apex Surface Mounted Downlight
3. Emerald Spike Spotlight
4. Titanium Surface Mounted Downlight

Left & Above – The Aeon Flex Linear Light showcases its capabilities on the Link Bridge in Melbourne Central. Shaped and conforming to the circular feature within the ceiling, the Aeon knows no bounds and provides a striking concept to the open space.

*Unios Luminaires: Aeon Flex Linear Light, Titanium Surface Mounted Downlight, Emerald Spike Spotlight*





The Apex Surface Mounted Downlight amplifies the impact and effect of the mirrored ceiling and checkered floor at Melbourne Central.

Unios Luminaire: Apex Downlight





# ARUP Office

Perth, WA

**Size**  
1450m<sup>2</sup>

**Date of Completion**  
February 2017

**Photographer**  
Richie Lu

**Architect**  
ARUP

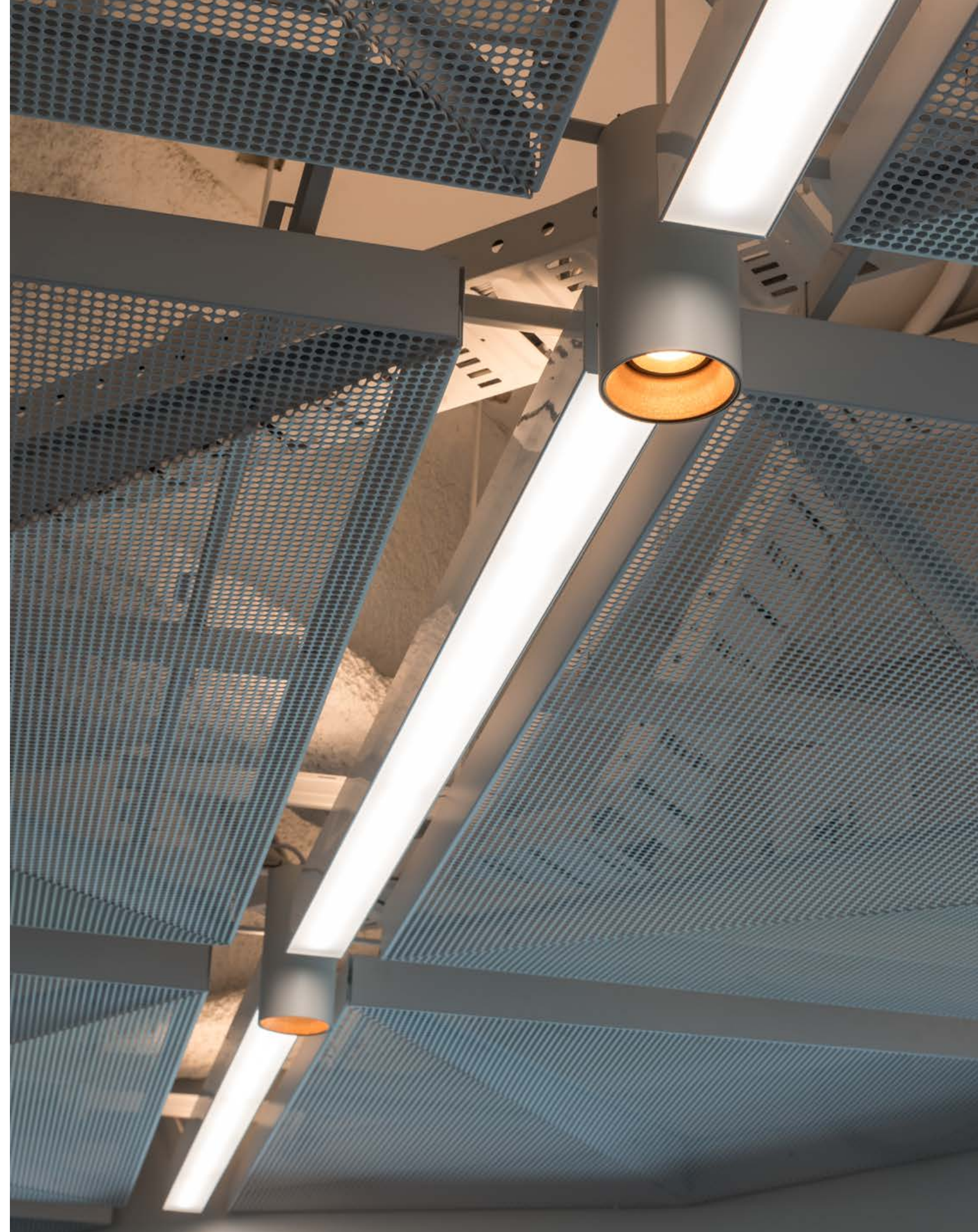
**Consulting Engineer**  
ARUP



ARUP continues to design buildings and infrastructure that shape the future, and their own office in Perth comes as no exception. The lighting solution for their Perth headquarters provides a superb example of future-proofing, visual comfort and minimalist design; with a layered approach that proves to be both practical and visually unique.

Project Luminaire List

1. Eclipse Strip Light
2. Horizon Track Light
3. LX S78 Linear Light
4. MX Track
5. Titanium Surface Mounted Downlight





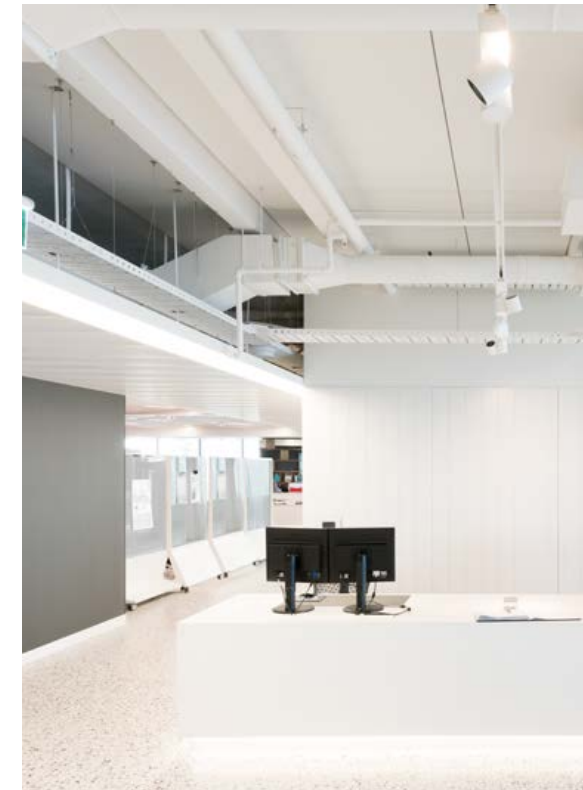


The Eclipse Strip Light creating dynamic visual illumination along surfaces as architectural details of the office space are brought to life throughout hallways and room entrances.

*Unios Luminaire: Eclipse Strip Light*

Right – To enhance and accentuate the exposed ceilings; a network of suspended linear profiles and downlights were utilised to provide a striking feature and excellent visual comfort.

*Unios Luminaires: LX S78 Linear Light, Titanium Surface Mounted Downlight, Eclipse Strip Light*



Left – Horizon Track Lights used to great effect in the reception and common areas. Each track light is paired with a honeycomb lens to reduce glare and provide a very comfortable working environment.

*Unios Luminaires: Horizon Track Light, MX Track*



# Arthur & Co.

Perth, WA

**Size**  
308m<sup>2</sup>

**Date of Completion**  
May 2018

**Photographer**  
Richie Lu

**Architect**  
Hassell

**Interior Designer**  
Mata Design Studio

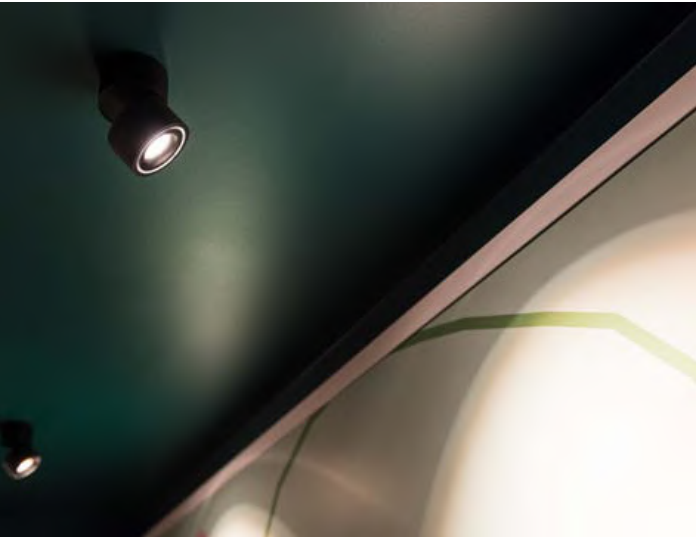
**Consulting Engineer**  
ATA Engineering

**Builder**  
Imperial Interiors

**Developer**  
BGC Development







Far Left, Left & Above – The Kinetik Surface Mounted Downlight adjusting its body to highlight feature artwork and create a general ambience for diners in Arthur & Co.

*Unios Luminaires: Kinetik Surface Mounted Downlight, Titanium Surface Mounted Downlight, Eclipse Strip Light*





Left & Right – With a linear spread lens, the Titanium Surface Mounted Downlight distributes an oval beam over dining tables for a wider, narrow spread of light.

*Unios Luminaires: Titanium Surface Mounted Downlight, Eclipse Strip Light*

Below – The Eclipse Strip runs along cable trays from above to provide sufficient indirect light and the perfect level of visual comfort for diners in Arthur & Co.

*Unios Luminaire: Eclipse Strip Light*



Project Luminaire List

1. Eclipse Strip Light
2. Kinetic Surface Mounted Downlight
3. Titanium Surface Mounted Downlight







# Masons Menswear

Melbourne, VIC

**Lighting Supplied by**  
Lights & Tracks

**Size**  
430m<sup>2</sup>

**Date of Completion**  
May 2017

**Photographer**  
Alessandro Cerutti

**Architect**  
Cox Architecture

**Builder**  
MRU Construction

**Electrical Contractor**  
CED Services





Throughout this highly curated collection of men's fashion, Eclipse profiles are subtly embedded to provide the perfect amount of illumination for each piece. The Eclipse Strip Light delivers excellent colour rendering to accurately accentuate the colours from the clothing in Masons.

*Unios Luminaire: Eclipse Strip Light*



Project Luminaire List

1. Eclipse Strip Light
2. Kobe Track Light
3. MX Track
4. Titanium G2 Downlight
5. Tourmaline Wall Light

Top – The Tourmaline Wall Light provides a soft, warm light in two directions in the Masons Menswear changeroom.

*Unios Luminaire: Tourmaline Wall Light*



Project Index

DoubleTree  
by Hilton  
pp. 6–21

<b>Size</b> 1666m²	<b>Architect</b> DesignInc	<b>Builder</b> SKS Builders	<b>Project Luminaire List</b>	
<b>Date of Completion</b> December 2018	<b>Lighting Designer</b> Lumino Design	<b>Electrical Contractor</b> PEAK Electrical	1. Aeon Flex Linear Light	9. Onyx Spotlight
<b>Photographer</b> Richie Lu	<b>Consulting Engineer</b> ARUP	<b>Developer</b> SKS Group	2. Apex Downlight	10. Pilot Handrail Light
			3. Diamond Panel Light	11. Ruby Cabinet Light
			4. Eclipse Strip Light	12. Titanium Semi Recessed Downlight
			5. Emerald Spike Spotlight	13. Titanium Slotter Downlight
			6. Kinetic Surface Mounted Downlight	14. Varano Slot Downlight
			7. Latitude Canopy Light	15. Vega Outdoor Light
			8. Luna Pin Spot Downlight	



The Seed House  
pp. 22–39

<b>Internal Size</b> 650m²	<b>Architect</b> fitzpatrick+partners	<b>Electrical Contractor</b> All Clear Electrical	<b>Project Luminaire List</b>	
<b>Date of Completion</b> December 2018	<b>Lighting Designer</b> fitzpatrick+partners		1. Aeon Flex Linear Light	5. Cluster Inground Uplight
<b>Photographer</b> Simon Whitbread John Gollings	<b>Builder</b> David Campbell Building		2. Akira Ceiling Light	6. Eclipse Strip Light
			3. Apex Surface Mounted Downlight	7. LX S62 Linear Light
			4. Axis Surface Mounted Downlight	8. Shift Out Downlight
				9. Spectrum Spike Light
				10. Titanium G2 Downlight



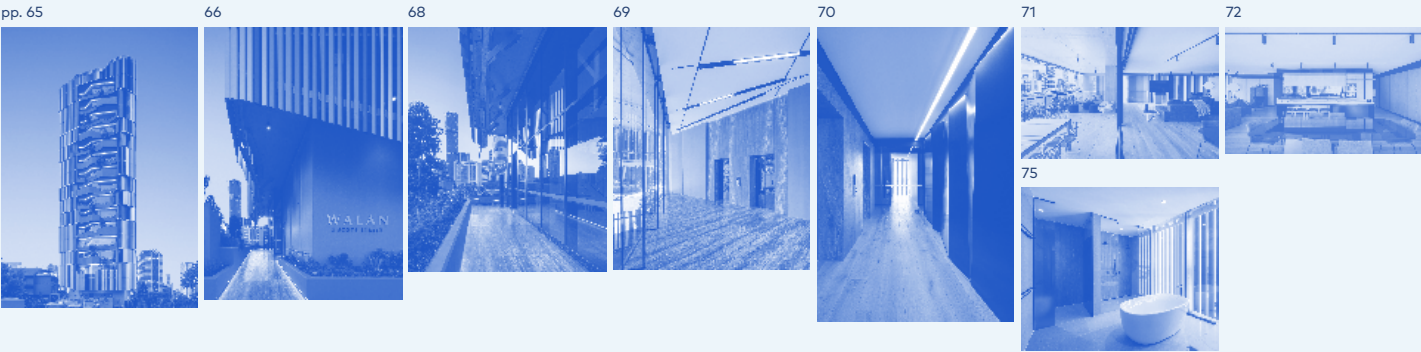


# Project Index

<b>Raine Square</b> pp. 40–53		<b>Lighting Supplied by</b> Monduluce	<b>Landscape Architect</b> REALMstudios	<b>Builder</b> Built	<b>Project Luminaire List</b> 1. Aeon Flex Linear Light 2. Eclipse Strip Light 3. Marc Wall Light
		<b>Size</b> 18,000m²	<b>Architect</b> Taylor Robinson Chaney Broderick and Cox Architecture	<b>Electrical Contractor</b> Everett-Smith	
		<b>Date of Completion</b> December 2018	<b>Consulting Engineer</b> Floth		
		<b>Photographer</b> Richie Lu			



<b>Walan Apartments</b> pp. 64–75		<b>Lighting Supplied by</b> Lights & Tracks	<b>Architect</b> bureau^proberts	<b>Builder</b> Hutchinson Builders	<b>Project Luminaire List</b> 1. Aeon Flex Linear Light 2. Athena Surface Mounted Downlight 3. Eclipse Strip Light 4. Emerald Spike Spotlight 5. Kobe Track Light 6. LX S62 Linear Light 7. MX Track 8. Titanium G2 Downlight
		<b>Size</b> 4520m²	<b>Lighting Engineer</b> Illumination Design Australia	<b>Electrical Contractor</b> Kee Services	
		<b>Date of Completion</b> December 2018	<b>Lighting Designer</b> Illumination Design Australia	<b>Developer</b> GBW Developments	
		<b>Photographer</b> Angus Martin			



<b>Portsea Hotel</b> pp. 54–63		<b>Lighting Supplied by</b> Lights & Tracks	<b>Photographer</b> Alessandro Cerutti	<b>Builder</b> Baxter Projects	<b>Project Luminaire List</b> 1. Apex Adjustable Downlight 2. Apex Dusk Downlight 3. Axis Surface Mounted Downlight 4. Cluster Inground Uplight 5. Eclipse Strip Light 6. Kobe Track Light 7. MX Track 8. Orbit Wall Light 9. Radius Pathway Light 10. Switch Downlight 11. Titanium Dusk Downlight 12. Titanium Starlight
		<b>Size</b> 1525m²	<b>Architect and Interiors</b> Dubois:	<b>Electrical Contractor</b> Tung Electrical	
		<b>Date of Completion</b> December 2018	<b>Project Manager</b> Directitude Management	<b>Developer</b> Colonial Leisure Group	



<b>Queensland Museum</b> pp. 76–83		<b>Lighting Supplied by</b> Raylinc	<b>Architect and Interiors</b> Architectus	<b>Electrical Contractor</b> Ryan Wilks	<b>Project Luminaire List</b> 1. Eclipse Strip Light 2. Eclipse Strip Light RGBW
		<b>Size</b> 7262m²	<b>Lighting Designer</b> ARUP	<b>Developer</b> Queensland Museum	
		<b>Date of Completion</b> September 2018	<b>Consulting Engineer</b> ARUP		
		<b>Photographer</b> Angus Martin	<b>Head Contractor</b> Intrec		





Project Index

Jackalope Hotel  
pp. 84–93

**Lighting Supplied by**  
Lights & Tracks  
**Size**  
5,200m<sup>2</sup>  
**Date of Completion**  
April 2017  
**Photographer**  
Alessandro Cerutti

**Architect**  
Carr  
**Interior Designer**  
Carr  
**Project Manager**  
Medley Group

**Consulting Engineer**  
Wood & Grieve  
Engineers  
**Builder**  
VCON  
**Developer**  
Louis Li

- Project Luminaire List**
- |                                   |                            |
|-----------------------------------|----------------------------|
| 1. Apex Adjustable Downlight      | 5. Emerald Spike Spotlight |
| 2. Axis Surface Mounted Downlight | 6. Moonstone Wall Light    |
| 3. Cuadro Wall Light              | 7. Titanium G2 Downlight   |
| 4. Eclipse Strip Light            | 8. Titanium Starlight      |
|                                   | 9. Zenith Wall Light       |



DFO  
pp. 94–101

**Lighting Supplied by**  
Monduluce  
**Size**  
24,000m<sup>2</sup>  
**Date of Completion**  
October 2018  
**Photographer**  
Richie Lu

**Architect**  
Taylor Robinson  
Chaney Broderick  
**Consulting Engineer**  
Wood & Grieve  
Engineers  
**Builder**  
Georgiou Group

**Electrical Contractor**  
Everett-Smith  
**Developer**  
Vicinity Centres and  
Perth Airport

- Project Luminaire List**
- |                           |                                       |
|---------------------------|---------------------------------------|
| 1. Aeon Flex Linear Light | 7. Titanium G2 Downlight              |
| 2. Apex Downlight         | 8. Titanium Slotter Downlight         |
| 3. Helix Wall Light       | 9. Titanium Surface Mounted Downlight |
| 4. Kobe Track Light       |                                       |
| 5. MX Track               |                                       |
| 6. Switch Downlight       |                                       |



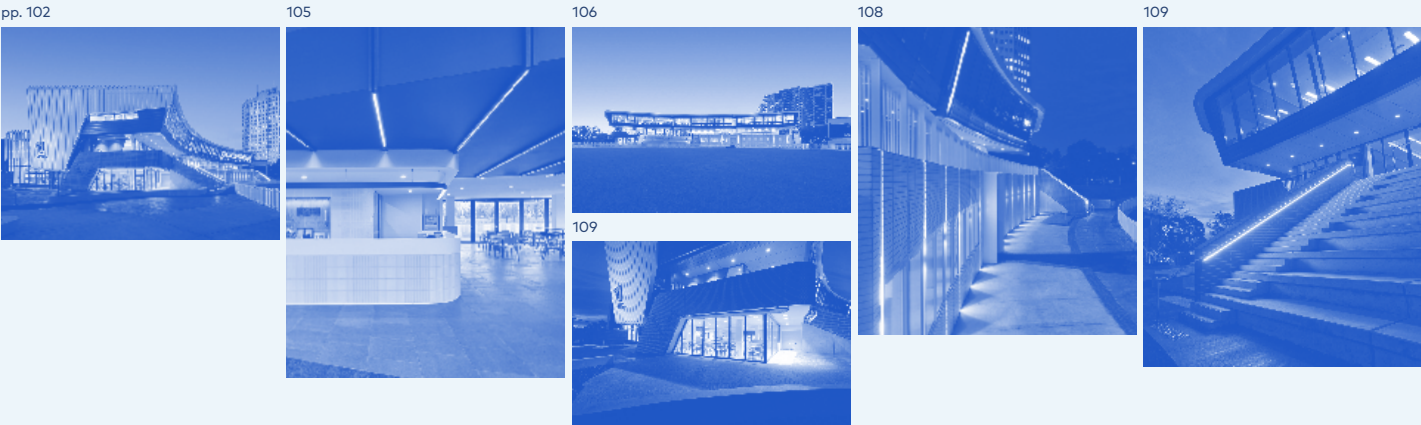
Junction Oval, VCCC  
pp. 102–109

**Lighting Supplied by**  
Lights & Tracks  
**Date of Completion**  
April 2018  
**Photographer**  
Alessandro Cerutti  
Jack Lovel

**Architect**  
Cox Architecture  
**Consulting Engineer**  
ARUP  
**Builder**  
Cockram Construction

**Electrical Contractor**  
Nuvo Group  
**Developer**  
Victorian Government  
and Cricket Australia

- Project Luminaire List**
- |                                    |
|------------------------------------|
| 1. Diamond Floodlight              |
| 2. Eclipse Strip Light             |
| 3. Genesis Slotter Light           |
| 4. Vortex Highbay                  |
| 5. Zeron Mini Fixed Two Wall Light |



Brown St Residence  
pp. 110–115

**Size**  
200m<sup>2</sup>  
**Date of Completion**  
January 2019  
**Photographer**  
Simon Whitbread

**Architect**  
Rod Pindar and  
Natalie Sciberras  
**Consulting Engineer**  
Taylor Thomson  
Whitting

**Builder**  
Rod Pindar and  
Natalie Sciberras  
**Electrical Contractor**  
Bright Light Electrical

- Project Luminaire List**
- |                                   |                            |
|-----------------------------------|----------------------------|
| 1. Apex Downlight                 | 7. Switch Downlight        |
| 2. Axis Surface Mounted Downlight | 8. Titanium G2 Downlight   |
| 3. Cuadro Wall Light              | 9. Titanium Dusk Downlight |
| 4. Eclipse Strip Light            | 10. Titanium Starlight     |
| 5. Emerald Spike Spotlight        | 11. Vespa Wall Light       |
| 6. Onyx Wall Light                |                            |





# Project Index

## Melbourne Central pp. 116–121

**Lighting Supplied by**  
Lights & Tracks  
**Size**  
55,100m<sup>2</sup>  
**Date of Completion**  
September 2018  
**Photographer**  
Alessandro Cerutti

**Architect**  
Kennedy Nolan  
**Consulting Engineer**  
ADP Consulting  
**Builder**  
Otto Construction  
Group

**Developer**  
GPT Group  
**Electrical Contractor**  
Lowe Electrical

- Project Luminaire List**
1. Aeon Flex Linear Light

2. Apex Surface Mounted Downlight

3. Emerald Spike Spotlight

4. Titanium Surface Mounted Downlight



## Arthur & Co pp. 128–133

**Size**  
308m<sup>2</sup>  
**Date of Completion**  
May 2018  
**Photographer**  
Richie Lu

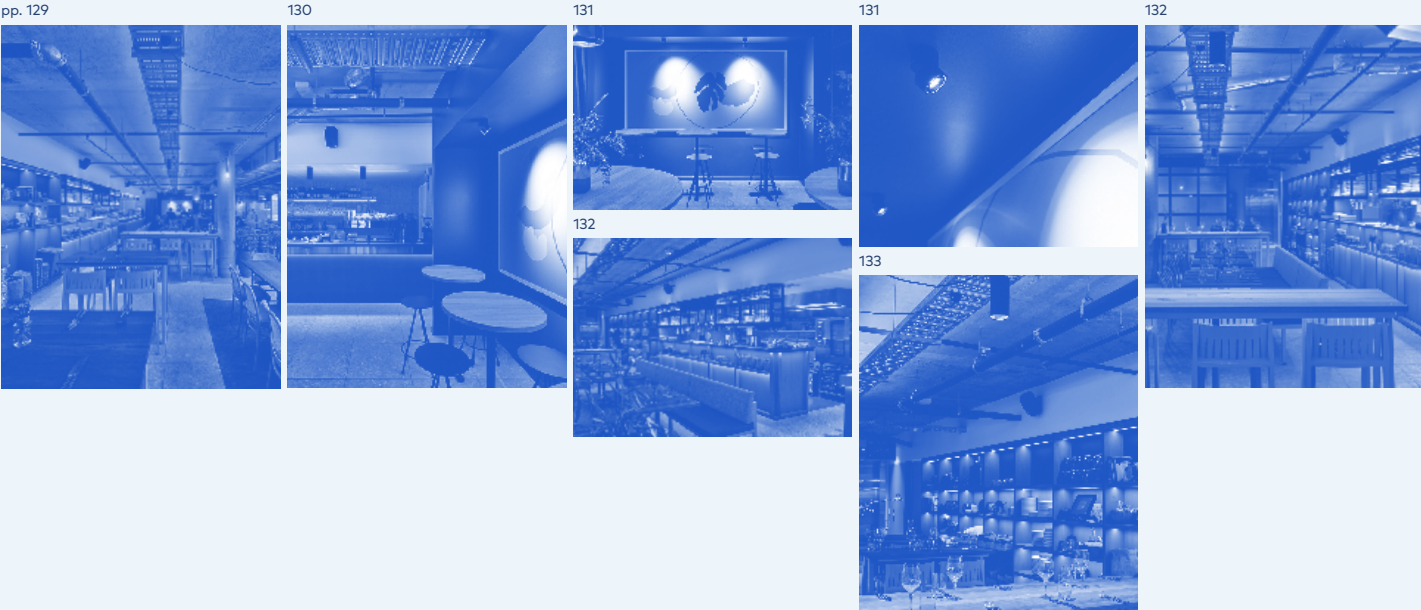
**Architect**  
Hassell  
**Interior Designer**  
Mata Design Studio  
**Consulting Engineer**  
ATA Engineering

**Builder**  
Imperial Interiors  
**Developer**  
BGC Development

- Project Luminaire List**
1. Eclipse Strip Light

2. Kinetic Surface Mounted Downlight

3. Titanium Surface Mounted Downlight



## ARUP pp. 122–127

**Size**  
1450m<sup>2</sup>  
**Date of Completion**  
February 2017

**Photographer**  
Richie Lu  
**Architect**  
ARUP

**Consulting Engineer**  
ARUP

- Project Luminaire List**
1. Eclipse Strip Light

2. Horizon Track Light

3. LX S78 Linear Light

4. MX Track

5. Titanium Surface Mounted Downlight



## Masons Menswear pp. 134–137

**Lighting Supplied by**  
Lights & Tracks  
**Size**  
430m<sup>2</sup>  
**Date of Completion**  
May 2017

**Photographer**  
Alessandro Cerutti  
**Architect**  
Cox Architecture  
**Builder**  
MRU Construction

**Electrical Contractor**  
CED Services

- Project Luminaire List**
1. Eclipse Strip Light

2. Kobe Track Light

3. MX Track

4. Titanium G2 Downlight

5. Tourmaline Wall Light







<b>Akira Ceiling Light</b> unios.com/akira	
Finishes	UV Textured Black, UV Textured White
Beam	110°
Absolute Luminous Flux	2755–8410lm
IP	20, 54
UGR	<19
Warranty	3 Years
Colour Temp	3000K, 4000K
CRI	80+
Efficacy	Up to 104lm/w
Colour Deviation	SDCM≤3
Lifetime	>54,000h L70
Dimming	LED Phase-Cut, DALI



<b>Apex Adjustable Downlight</b> unios.com/apexadjustable	
Finishes	UV Textured Black, UV Textured White
Beam	15°, 40°, 60°, 92°
Absolute Luminous Flux	530–990lm
IP	65
UGR	<19, <25
Warranty	5 Years
Colour Temp	2700K, 3000K, 4000K
CRI	92+
Efficacy	Up to 75lm/w
Colour Deviation	SDCM≤3
Lifetime	>100,000h L70
Dimming	LED Phase-Cut, DALI



<b>Apex Downlight</b> unios.com/apex	
Finishes	UV Textured Black, UV Textured White
Beam	15°, 40°, 60°, 70°, 75°, 90°
Absolute Luminous Flux	550–2650lm
IP	65
UGR	<19, <25
Warranty	5 Years
Colour Temp	2700K, 3000K, 4000K
CRI	92+
Efficacy	Up to 92lm/w
Colour Deviation	SDCM≤3
Lifetime	>100,000h L70
Dimming	LED Phase-Cut, DALI



<b>Apex Dusk Downlight</b> unios.com/apexdusk	
Finishes	UV Textured Black, UV Textured White
Beam	15°, 40°, 70°, 92°
Absolute Luminous Flux	800lm
IP	65
UGR	<16
Warranty	5 Years
Colour Temp	3000K - 2000K
CRI	90+
Efficacy	Up to 59lm/w
Colour Deviation	SDCM≤3
Lifetime	>60,000h L70
Dimming	LED Phase-Cut, DALI



<b>Apex Surface Mounted Downlight</b> unios.com/apex	
Finishes	Textured Black, Textured White
Beam	15°, 40°, 60°, 90°
Absolute Luminous Flux	550-2650lm
IP	20
UGR	<19, <25
Warranty	5 Years
Colour Temp	2700K, 3000K, 4000K
CRI	92+
Efficacy	Up to 92lm/w
Colour Deviation	SDCM≤3
Lifetime	>100,000h L70
Dimming	LED Phase-Cut, DALI



<b>Athena Surface Series</b> unios.com/athena	
Finishes	UV Textured Black, UV Textured White, UV Textured Grey
Beam	40°
Absolute Luminous Flux	1705–1740lm
IP	65
Warranty	5 Years
Colour Temp	3000K, 4000K
CRI	80+
Efficacy	Up to 81lm/w
Colour Deviation	SDCM≤3
Lifetime	>100,000h L70
Dimming	LED Phase-Cut, DALI



<b>Axis Surface Mounted Downlight</b> unios.com/axis	
Finishes	UV Textured Black, UV Textured White
Beam	15°, 30°, 40°, 60°
Absolute Luminous Flux	565–2770lm
IP	65
UGR	<16
Warranty	5 Years
Colour Temp	2700K, 3000K, 4000K
CRI	80+, 97+
Efficacy	Up to 91lm/w
Colour Deviation	SDSM≤2 , SDCM≤3
Lifetime	>54,000h L70
Dimming	LED Phase-Cut, DALI



<b>Diamond Panel Light</b> unios.com/diamondpanel	
Finishes	Matt White
Beam	85°
Absolute Luminous Flux	2260–5030lm
IP	20
UGR	<19
Warranty	5 Years
Colour Temp	3000K, 4000K
CRI	80+
Efficacy	Up to 107lm/w
Colour Deviation	SDCM≤3
Lifetime	>52,000h L70
Dimming	LED Phase-Cut, DALI



<b>Genesis Slotter Light</b> unios.com/genesis	
Finishes	Textured Black, Textured White
Beam	15°, 30°, 45°, 60°
Absolute Luminous Flux	2355–3245lm
IP	20
UGR	<19
Warranty	5 Years
Colour Temp	2700K, 3000K, 4000K
CRI	92+
Efficacy	Up to 80lm/w
Colour Deviation	SDCM≤3
Lifetime	>100,000h L70
Dimming	LED Phase-Cut, DALI



<b>Kinetic Surface Mounted Downlight</b> unios.com/kinetic	
Finishes	Textured Black, Textured White,
Beam	15°, 23°, 34°, 50°
Absolute Luminous Flux	755–1230lm
IP	20
UGR	<13
Warranty	5 Years
Colour Temp	2700K, 3000K, 4000K
CRI	92+
Efficacy	Up to 79lm/w
Colour Deviation	SDCM≤3
Lifetime	>100,000h L70
Dimming	LED Phase-Cut, DALI



<b>Luna Pin Spot Downlight</b> unios.com/kinetic	
Finishes	Textured Black, Textured White
Beam	24°, 38°
Absolute Luminous Flux	585–590lm
IP	20
UGR	<13
Warranty	5 Years
Colour Temp	2700K, 3000K, 4000K
CRI	92+
Efficacy	Up to 53lm/w
Colour Deviation	SDCM≤3
Lifetime	>100,000h L70
Dimming	LED Phase-Cut, DALI



<b>Ruby Cabinet Light</b> unios.com/rubycabinet	
Finishes	Matt White, Brushed Aluminium
Beam	110°
Absolute Luminous Flux	160–185lm
IP	54
UGR	<25
Warranty	3 Years
Colour Temp	3000K, 4000K
CRI	80+
Efficacy	Up to 41lm/w
Colour Deviation	SDCM≤3
Lifetime	>65,000h L70
Dimming	1-10V, DALI



<b>Shift Out Downlight</b> unios.com/shift	
Finishes	Textured Black, Textured White
Beam	23°, 34°, 50°
Absolute Luminous Flux	500–515lm
IP	20
UGR	<13
Warranty	5 Years
Colour Temp	2700K, 3000K, 4000K
CRI	92+
Efficacy	Up to 60lm/w
Colour Deviation	SDCM≤3
Lifetime	>100,000h L70
Dimming	LED Phase-Cut, DALI



<b>Switch Downlight</b> unios.com/switch	
Finishes	Textured Black, Textured White
Beam	15°, 20°, 35°, 40°, 60°
Absolute Luminous Flux	625–2055lm
IP	20
UGR	<19
Warranty	5 Years
Colour Temp	2700K, 3000K, 4000K
CRI	92+
Efficacy	Up to 87lm/w
Colour Deviation	SDCM≤3
Lifetime	>100,000h L70
Dimming	LED Phase-Cut, DALI



<b>Titanium Dusk Downlight</b> unios.com/titaniumdusk	
Finishes	UV Textured Black, UV Textured White
Beam	15°, 36°, 60°, 75°
Absolute Luminous Flux	805lm
IP	44
UGR	<16
Warranty	7 Years
Colour Temp	3000K - 2000K
CRI	90+
Efficacy	Up to 87lm/w
Colour Deviation	SDCM≤3
Lifetime	>60,000h L70
Dimming	LED Phase-Cut, DALI



<b>Titanium G2 Downlight</b> unios.com/titanium	
Finishes	UV Textured Black, UV Textured White
Beam	15°, 24°, 36°, 60°, 75°
Absolute Luminous Flux	1005–2540lm
IP	44
UGR	<16
Warranty	7 Years
Colour Temp	2700K, 3000K, 4000K
CRI	92+
Efficacy	Up to 87lm/w
Colour Deviation	SDCM≤3
Lifetime	>100,000h L70
Dimming	LED Phase-Cut, DALI



<b>Titanium Semi Recessed Downlight</b> unios.com/titaniumsemi	
Finishes	UV Textured Black, UV Textured White
Beam	15°, 19°, 30°, 33°, 50°
Absolute Luminous Flux	150–1470lm
IP	54
UGR	<13, <16
Warranty	5 Years
Colour Temp	2700K, 3000K, 4000K
CRI	92+
Efficacy	Up to 88lm/w
Colour Deviation	SDCM≤3
Lifetime	>60,000h L70, >100,000h L70
Dimming	LED Phase-Cut, DALI



<b>Titanium Slotter Downlight</b> unios.com/titaniumslotter	
Finishes	Textured Black, Textured White
Beam	24°, 38°, 60°, 83°
Absolute Luminous Flux	750–850lm
IP	20
UGR	<16
Warranty	5 Years
Colour Temp	2700K, 3000K, 4000K
CRI	92+
Efficacy	Up to 77lm/w
Colour Deviation	SDCM≤3
Lifetime	>100,000h L70
Dimming	LED Phase-Cut, DALI



<b>Titanium Starlight</b> unios.com/titaniumstarlight	
Finishes	UV Textured Black, UV Textured White
Beam	50°
Absolute Luminous Flux	470–500lm
IP	65
UGR	<13
Warranty	3 Years
Colour Temp	2700K, 3000K, 4000K
CRI	92+
Efficacy	Up to 82lm/w
Colour Deviation	SDCM≤3
Lifetime	>100,000h L70
Dimming	LED Phase-Cut, DALI



<b>Titanium Surface Mounted Downlight</b> unios.com/titaniumsm	
Finishes	Textured Black, Textured White
Beam	15°, 36°, 60°, 75°
Absolute Luminous Flux	1190–1225lm
IP	20
UGR	<16
Warranty	7 Years
Colour Temp	2700K, 3000K, 4000K
CRI	92+
Efficacy	Up to 87lm/w
Colour Deviation	SDCM≤3
Lifetime	>100,000h L70
Dimming	LED Phase-Cut, DALI



<b>Varano Slot Downlight</b> unios.com/varano	
Finishes	Textured Black, Textured White
Beam	24°, 38°
Absolute Luminous Flux	480–500lm
IP	20
UGR	<13
Warranty	5 Years
Colour Temp	2700K, 3000K, 4000K
CRI	92+
Efficacy	Up to 45lm/w
Colour Deviation	SDCM≤3
Lifetime	>100,000h L70
Dimming	LED Phase-Cut, DALI





<b>Tourmaline Wall Light</b> unios.com/tourmaline	
Finishes	Textured Black, Textured White, Black/Gold Trim White/Gold Trim
Beam	40°
Absolute Luminous Flux	400lm
IP	20
Warranty	3 Years
Colour Temp	3000K
CRI	80+
Efficacy	Up to 56lm/w
Colour Deviation	SDCM≤3
Lifetime	70,000h L70
Dimming	LED Phase-Cut, DALI



<b>Cuadro Wall Light</b> unios.com/cuadro	
Finishes	UV Textured Black, UV Textured White, UV Textured Grey
Beam	90°
Absolute Luminous Flux	60–380lm
IP	65
Warranty	3 Years
Colour Temp	2700K, 3000K, 4000K
CRI	80+
Efficacy	Up to 27lm/w, 55lm/w
Colour Deviation	SDCM≤3
Lifetime	>70,000h L70
Dimming	1-10V, DALI



<b>Helix Wall Light</b> unios.com/helix	
Finishes	UV Textured Black, UV Textured White
Beam	90°
Absolute Luminous Flux	405–825lm
IP	44
Warranty	3 Years
Colour Temp	3000K, 4000K
CRI	90+
Efficacy	Up to 69lm/w
Colour Deviation	SDCM≤3
Lifetime	>59,000h L70
Dimming	DALI



<b>Marc Wall Light</b> unios.com/marc	
Finishes	UV Textured Black, UV Textured White, UV Textured Grey
Beam	80°
Absolute Luminous Flux	1020lm
IP	65
Warranty	3 Years
Colour Temp	3000K
CRI	80+
Efficacy	Up to 49lm/w
Colour Deviation	SDCM≤3
Lifetime	>70,000h L70
Dimming	LED Phase-Cut, DALI



<b>Moonstone Wall Light</b> unios.com/moonstone	
Finishes	UV Textured Black, UV Textured White, UV Textured Grey
Beam	50°
Absolute Luminous Flux	415lm
IP	65
Warranty	3 Years
Colour Temp	3000K
CRI	80+
Efficacy	Up to 65lm/w
Colour Deviation	SDCM≤3
Lifetime	>70,000h L70
Dimming	LED Phase-Cut, DALI



<b>Onyx Wall Light</b> unios.com/onyxwall	
Finishes	UV Textured Black, UV Textured White, UV Textured Grey
Beam	40°
Absolute Luminous Flux	730lm
IP	65
Warranty	3 Years
Colour Temp	3000K
CRI	80+
Efficacy	Up to 89lm/w
Colour Deviation	SDCM≤3
Lifetime	>63,500h L70
Dimming	LED Phase-Cut, DALI



<b>Onyx Spotlight</b> unios.com/onyxspot	
Finishes	UV Textured Black, UV Textured White, UV Textured Grey
Beam	35°
Absolute Luminous Flux	560lm
IP	65
Warranty	3 Years
Colour Temp	3000K
CRI	80+
Efficacy	Up to 58lm/w
Colour Deviation	SDCM≤3
Lifetime	>63,500h L70
Dimming	LED Phase-Cut, DALI



<b>Orbit Wall Light</b> unios.com/orbit	
Finishes	UV Textured Black, UV Textured White, UV Textured Grey
Beam	120°
Absolute Luminous Flux	8lm
IP	65
Warranty	3 Years
Colour Temp	2700K, 3000K, 4000K
CRI	80+
Efficacy	Up to 4lm/w
Colour Deviation	SDCM≤3
Lifetime	>60,500h L70
Dimming	LED Phase-Cut, DALI



<b>Vega Outdoor Light</b> unios.com/vega	
Finishes	UV Textured Black, UV Textured White, UV Textured Silver
Beam	110°
Absolute Luminous Flux	670–1140lm
IP	65
Warranty	3 Years
Colour Temp	3000K, 4000K
CRI	80+
Efficacy	Up to 81lm/w
Colour Deviation	SDCM≤3
Lifetime	>70,000h L70
Dimming	DALI



<b>Vespa Wall Light</b> unios.com/vespa	
Finishes	UV Textured Black, UV Textured White
Beam	80°
Absolute Luminous Flux	840–1780lm
IP	65
Warranty	3 Years
Colour Temp	3000K
CRI	80+
Efficacy	Up to 82lm/w
Colour Deviation	SDCM≤3
Lifetime	>70,000h L70
Dimming	LED Phase-Cut, DALI



<b>Zenith Wall Light</b> unios.com/zenith	
Finishes	UV Textured Black, UV Textured White, UV Textured Grey
Beam	20°
Absolute Luminous Flux	35–40lm
IP	65
Warranty	3 Years
Colour Temp	2700K, 3000K, 4000K
CRI	80+
Efficacy	Up to 16lm/w
Colour Deviation	SDCM≤3
Lifetime	>60,500h L70
Dimming	1-10V, DALI



<b>Zeron Mini Surface Series</b> unios.com/zeronmini	
Finishes	UV Textured Black, UV Textured White, UV Textured Grey
Beam	40°
Absolute Luminous Flux	545–1000lm
IP	65
Warranty	3 Years
Colour Temp	3000K, 4000K
CRI	80+
Efficacy	Up to 74lm/w
Colour Deviation	SDCM≤3
Lifetime	>63,500h L70
Dimming	LED Phase-Cut, DALI



<b>Aeon Flex Linear Light</b> unios.com/aeonflex	
Material	Encapsulated Polyurethane
Beam	120°
Absolute Luminous Flux	630–850lm
Lengths	Up to 5028mm (with a maximum continous length of 10 metres)
IP	68
Warranty	5 Years
Colour Temp	2700K, 3000K, 4000K, 6000K, RGB
CRI	80+
Efficacy	Up to 94lm/w
Colour Deviation	SDCM≤3
Lifetime	>54,000h L70
Dimming	1-10V, DALI



<b>Eclipse G2 Strip Light</b> unios.com/eclipseg2	
Material	Flexi PCB, Flexi PCB/Aluminium, Encapsulated Flexi PCB, Encapsulated Flexi PCB/Aluminium
Beam	110°
Absolute Luminous Flux	450–1885lm
Length	Cut length of 25mm increments
IP	20, 67(strip), 67(extrusion)
Warranty	3 Years
Colour Temp	2700K, 3000K, 4000K, 6500K, RGB, RGBW
CRI	90+
Efficacy	Up to 95lm/w
Colour Deviation	SDCM≤3
Lifetime	>100,000h L70
Dimming	LED Phase-Cut, 1-10V, DALI



<b>LX S62 Linear Light</b> unios.com/lxs62	
Finishes	Textured Black Textured White Black/White Trim White/Black Trim
Beam	90°, 120°
Absolute Luminous Flux	875–5990lm
Lengths	570–2250mm
IP	40
UGR	<19, <22
Warranty	5 Years
Colour Temp	2700K, 3000K, 4000K
CRI	82+
Efficacy	Up to 101lm/w
Colour Deviation	SDCM≤3
Lifetime	>60,000h L80B10
Dimming	1-10V, DALI



<b>LX S78 Linear Light</b> unios.com/lxs78	
Finishes	Textured Black Textured White Black/White Trim White/Black Trim
Beam	90°, 120°
Absolute Luminous Flux	1340–2250lm
Lengths	570–2250mm
IP	40
UGR	<19, <22
Warranty	5 Years
Colour Temp	2700K, 3000K, 4000K
CRI	82+
Efficacy	Up to 105lm/w
Colour Deviation	SDCM≤3
Lifetime	>60,000h L80B10
Dimming	1-10V, DALI



<b>Horizon Track Light</b> unios.com/horizon	
Finishes	Textured Black, Textured White
Beam	15°, 25°, 30°, 40°, 60°
Absolute Luminous Flux	590–2450lm
IP	20
UGR	<16
Warranty	5 Years
Colour Temp	2700K, 3000K, 4000K
CRI	80+
Efficacy	Up to 85lm/w
Colour Deviation	SDCM≤3
Lifetime	>54,000h L70
Dimming	LED Phase-Cut, DALI



<b>Kobe Track Light</b> unios.com/kobe	
Finishes	Textured Black Textured White Black/Gold Trim White/Gold Trim
Beam	15°, 36°, 60°
Absolute Luminous Flux	735–3460lm
IP	20
Warranty	5 Years
Colour Temp	2700K, 3000K, 4000K
CRI	92+, 97+
Efficacy	Up to 93lm/w
Colour Deviation	SDCM≤3
Lifetime	>100,000h L70
Dimming	LED Phase-Cut, DALI



<b>MX Track</b> unios.com/mxtrack	
Finishes	Textured Black, Textured White
Lengths	1000mm, 2000mm, 3000mm
Track Mount	Single Circuit, Three Circuit
Mounting	Surface Mounted, Recessed, Suspended
Accessories	Live End Connector, End Cap, Straight Joiner, Centre Feed, L Connector, T Connector, Cross Connector, Ajustable L Connector, Suspension Kit



# Luminaire Index

## Industrial



<b>Diamond Floodlight</b> unios.com/diamondflood	
Finishes	Matt Black
Beam	110°
Absolute Luminous Flux	940–18,200lm
IP	65
Warranty	5 Years
Colour Temp	3000K, 4000K
CRI	80+
Efficacy	Up to 103lm/w
Colour Deviation	SDCM≤4
Lifetime	>59,000h L70



<b>Latitude Canopy Light</b> unios.com/latitude	
Finishes	Matt White
Beam	90°
Absolute Luminous Flux	6470–16,210lm
IP	65
Warranty	5 Years
Colour Temp	3000K, 4000K, 5000K
CRI	80+
Efficacy	Up to 134lm/w
Colour Deviation	SDCM≤3
Lifetime	>62,000h L70



<b>Vortex Highbay</b> unios.com/vortex	
Finishes	Matt Black
Beam	60°, 70°, 90°, 120°
Absolute Luminous Flux	6500–25,695lm
IP	20, 65
Warranty	5 Years
Colour Temp	3000K, 4000K, 5000K
CRI	80+
Efficacy	Up to 131lm/w
Colour Deviation	SDCM≤3
Lifetime	>60,000h L70
Dimming	DALI

## Landscaping



<b>Cluster Inground Uplight</b> unios.com/cluster	
Finishes	UV Textured Black, Stainless Steel 316, Dark Bronze
Beam	15°, 30°
Absolute Luminous Flux	140–315lm
IP	67
Warranty	3 Years
Colour Temp	3000K
CRI	80+
Efficacy	Up to 50lm/w
Colour Deviation	SDCM≤3
Lifetime	>63,500h L70
Dimming	1-10V, DALI



<b>Emerald Spike Spotlight</b> unios.com/emeraldspike	
Finishes	UV Textured Black, UV Textured Grey
Beam	15°, 24°, 38°
Absolute Luminous Flux	320–650lm
IP	65
Warranty	3 Years
Colour Temp	3000K, 4000K
CRI	80+
Efficacy	Up to 71lm/w
Colour Deviation	SDCM≤3
Lifetime	>62,000h L70
Dimming	1-10V, DALI



<b>Pilot Handrail Light</b> unios.com/pilot	
Finishes	Stainless Steel 316L
Beam	70°, 70° (Asymmetrical)
Absolute Luminous Flux	105–140lm
IP	67
Warranty	5 Years
Colour Temp	27000K, 3000K, 4000K, RGB
CRI	80+
Efficacy	Up to 97lm/w
Colour Deviation	SDCM≤3
Lifetime	>50,000h L70
Dimming	1-10V, DALI



<b>Spectrum Spike Light</b> unios.com/spectrum	
Finishes	UV Textured Black, UV Textured Grey
Beam	60°
Absolute Luminous Flux	300lm
IP	65
Warranty	3 Years
Colour Temp	3000K
CRI	80+
Efficacy	Up to 52lm/w
Colour Deviation	SDCM≤3
Lifetime	>59,000h L70
Dimming	1-10V, DALI



<b>Radius Pathway Light</b> unios.com/radius	
Finishes	UV Textured Black, Stainless Steel 316
Beam	60–100°
Absolute Luminous Flux	32lm
IP	67
Warranty	3 Years
Colour Temp	3000K
CRI	80+
Efficacy	Up to 3lm/w
Colour Deviation	SDCM≤3
Lifetime	>63,500h L70
Dimming	1-10V, DALI

# Resources

Unios produces a wide range of resources and tools that aims to provide convenience and insight. Each resource serves a specific purpose in your search for the perfect light.

## Unios Toolbox

This digital tool provides you with a platform for configuring, bookmarking and collaborating on luminaires for any project.

[unios.com/toolbox](https://unios.com/toolbox)

## Catalogues

Stay up to date with the latest Unios luminaire releases with our range of product catalogues.

[unios.com/catalogues](https://unios.com/catalogues)

## Magazine

Universal Light is a biannual magazine with contributions by lighting experts for the lighting specifier community.

[unios.com/universallight](https://unios.com/universallight)

## White Papers

Learn about the specifics of new technologies and trending topics in methodically researched white papers.

[unios.com/whitepapers](https://unios.com/whitepapers)



# Special Thanks

---

Unios would like to give a special thanks to the following contributors who generously contributed their time and efforts towards this publication.

<b>Portsea Hotel</b> David Dubois – Dubois: Adrian Pizze – Lights & Tracks David Miller – Directitude Management	<b>Queensland Museum</b> Shaun Kent – ARUP Rebekah Collins – Queensland Museum Roland Poon – Raylinc Matt Memory – Raylinc
<b>Walan Apartments:</b> Sebastian Curtis – Hutchinson Builders Adrian Pizze – Lights & Tracks Ben Marshel – Illumination Design Australia Cam Ginardi – GBW Developments	<b>Raine Square</b> Damian de Wind – Mondoluce Andrea de Wind – Mondoluce
<b>The Seed House</b> James Fitzpatrick – fitzpatrick+partners	<b>DoubleTree by Hilton</b> Thomas Powell – SKS Group

---

This publication and all the projects mentioned wouldn't be possible without every designer, consultant, builder, developer and contractor involved.

Alessandro Cerutti	Floth	Perth Airport
All Clear Electrical	GBW Developments	Queensland Museum
Angus Martin	Georgiou Group	Raylinc
Architectus	GPT Group	REALMStudios
ARUP	Hutchinson Builders	Richie Lu
ATA Engineering	Illumination Design Australia	Rod Pindar
Baxter Projects	Imperial Interiors	Ryan Wilks
BGC Development	Intrec	Simon Whitbread
Built	Jack Lovel	SKS Builders
bureau^proberts	John Gollings	SKS Group
Carr	Kee Services	Taylor Robinson-
CED Services Group	Kennedy Nolan	Chaney Broderick
Cockram Construction	Lights & Tracks	Taylor Thomson Whitting
Colonial Leisure Group	Louis Li	Tung Electrical Services
Cox Architecture	Lumino Design	VCON
Cricket Australia	Mata Design Studio	Vicinity Centres
David Campbell Building	Mondoluce	Victorian Government
DesignInc	MRU Construction	Wood & Grieve Engineers
Directitude Management	Natalie Sciberras	
Dubois:	Nuvo Group	
Everett-Smith	Otto Construction Group	
fitzpatrick+partners	Peak Industrial Electrical	

---

Published by

---

**Unios Design**

---

© Unios Australia Pty Ltd 2019

No part of this publication may be reproduced without prior permission from Unios Australia Pty Ltd. Models and technical specifications are subject to modification and enhancements.

Printed in Australia.