



1



2



1	Axis Surface Mounted Downlight	Page 153	7W - 15W	See unios.com/axis-sm for more details
2	Axis Track Light	Page 205	7W - 15W	See unios.com/axis-track for more details



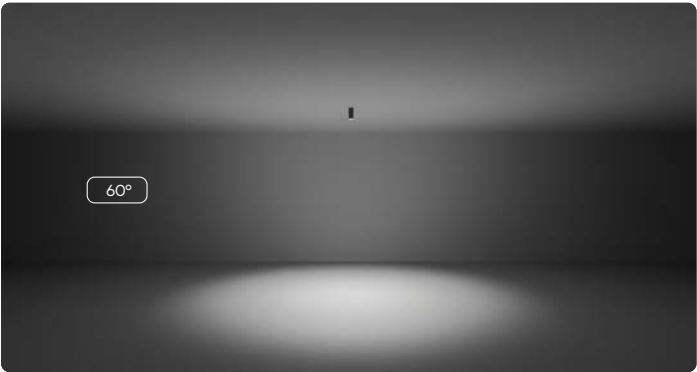
Axis

Surface Mounted Downlight



		LED Power	Lumens (at 3000K)	Beam	Weight
1	Small (60mm)	7W (200mA)	531lm	60°	860g
2	Medium (80mm)	15W (400mA)	1139lm	60°	1.9kg

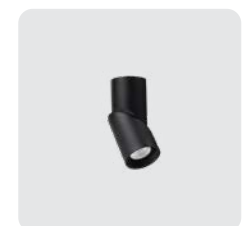
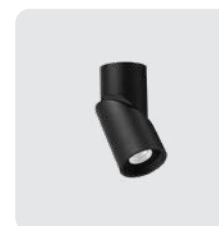
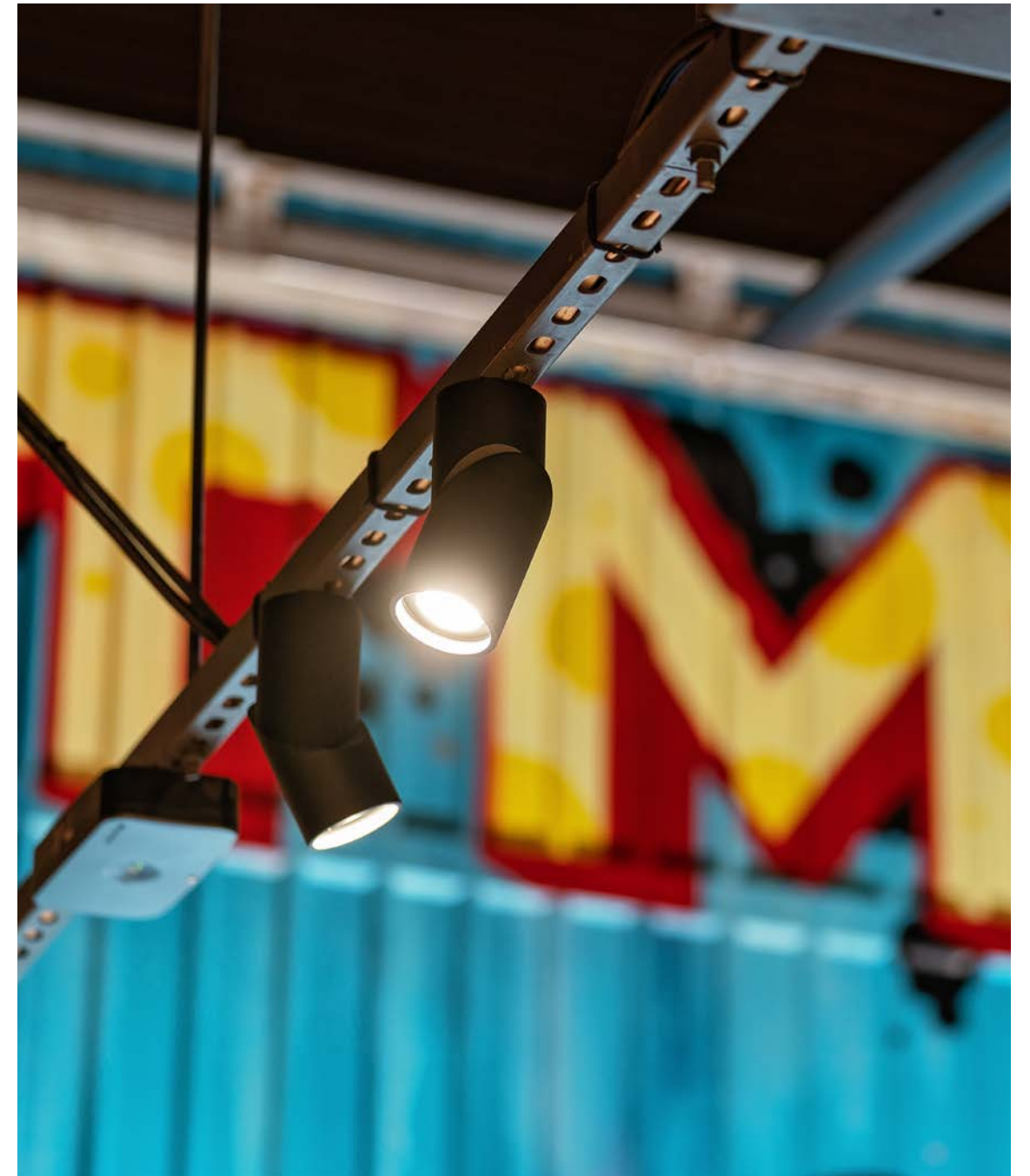
Key Information		Design		Performance		Driver	
Mounting	Ceiling Surface	Product Family	Axis	Lumen efficacy	Up to 86lm/W	Phase Cut	Built in
Finish	<input checked="" type="checkbox"/> Textured Black <input type="checkbox"/> Textured White	Adjustability	90° Tilt	CRI (Ra/R9)	97+ (R9: >90)	DALI	Remote
LED CCT	<input checked="" type="checkbox"/> 3000K <input type="checkbox"/> 4000K	Material	Powder Coated Aluminium	UGR	<16	Bluetooth	Remote
Warranty	5 Year	IP Rating	IP65	Lifetime (Ta 25°C)	>55,000h L90B10		
		Class Rating	Class I	Ambient Temperature Range	10°- 30°C		
				SDCM	≤2		
				COI Compliance model requirements	4000K		





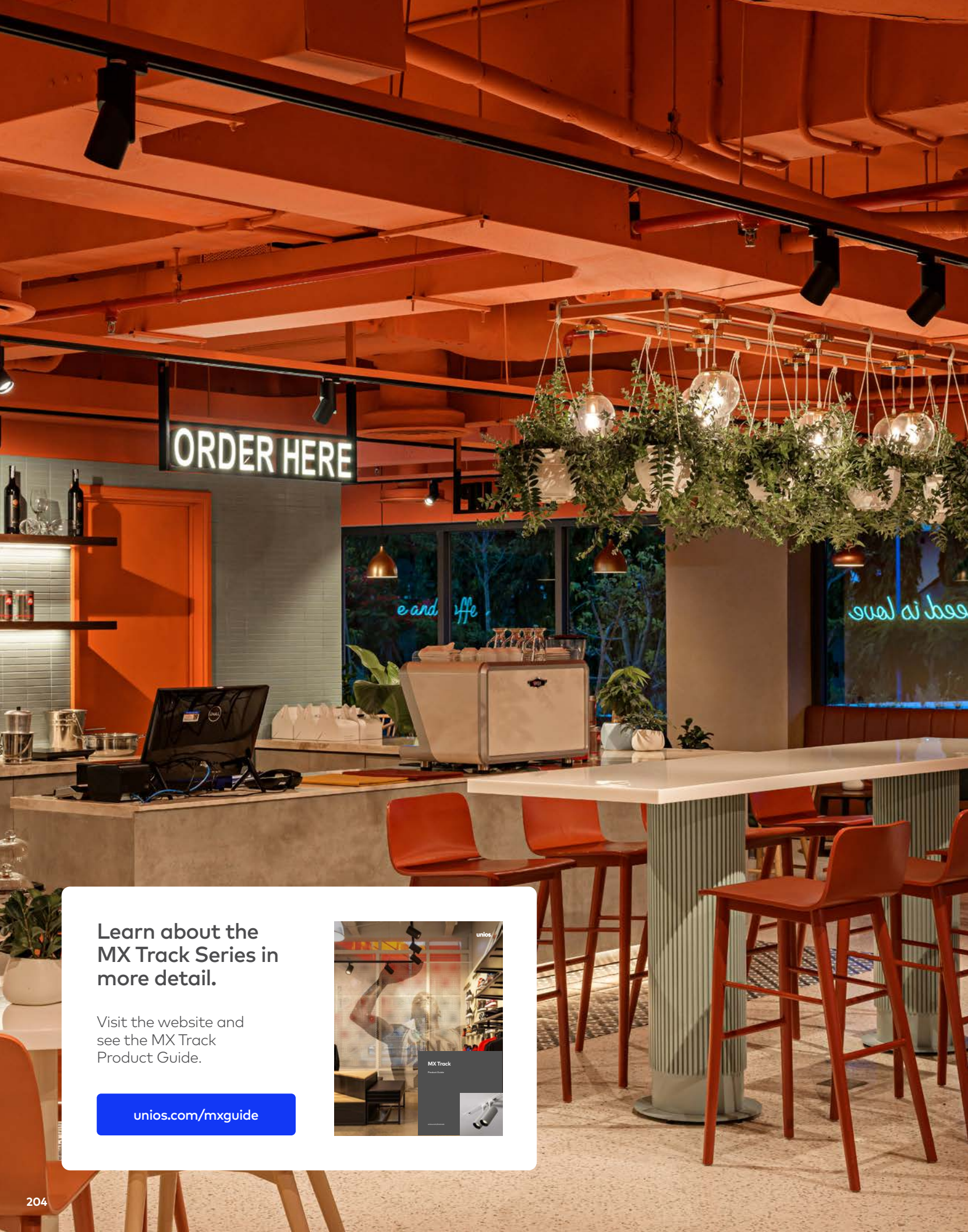
Axis

Surface Mounted Downlight



Axis
Surface Mounted Downlight
Medium (80mm)
Textured Black
Jackalope Hotel

Axis
Surface Mounted Downlight
Small (60mm)
Textured Black
District Sky Bar



Axis

Track Light



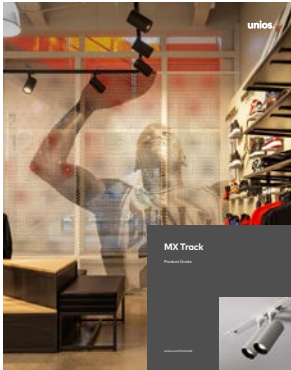
		LED Power	Lumens (at 3000K)	Beam	Weight	Driver
1	Small	7W (200mA)	755lm	60°	910g	Phase Cut, DALI
2	Medium	15W (400mA)	1363lm	60°	2.0kg	Phase Cut, DALI, Bluetooth

Key Information		Design		Performance		Track & Driver Compatibility	
Mounting	Track	Product Family	Axis	Lumen efficacy	Up to 86lm/W	Phase Cut	MX1 Built In, MX3 Built In
Finish	<input checked="" type="checkbox"/> Textured Black <input type="checkbox"/> Textured White	Adjustability	350° Rotation, 90° Tilt	CRI (Ra/R9)	97+ (R9: >90)	DALI	MX5 In-Track
LED CCT	<input checked="" type="checkbox"/> 3000K <input checked="" type="checkbox"/> 4000K	Material	Powder Coated Aluminium	UGR	<16	Bluetooth	MX5 In-Track
Warranty	5 Year	IP Rating	IP20	Lifetime (Ta 25°C)	>55,000h L90B10		
		Class Rating	Class I	Ambient Temperature Range	10°- 30°C		
				SDCM	≤2		
				COI Compliance model requirements	4000K		

Learn about the MX Track Series in more detail.

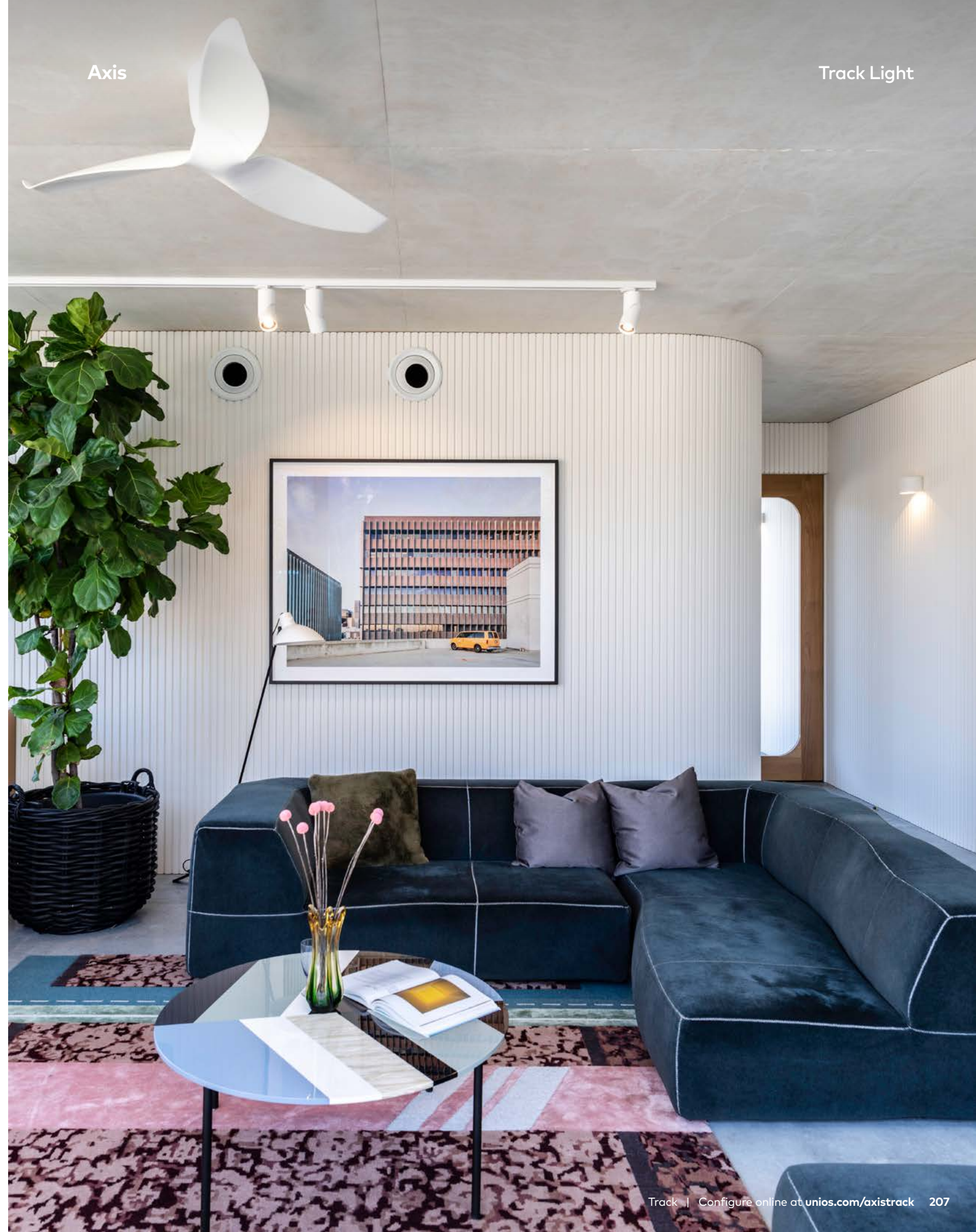
Visit the website and see the MX Track Product Guide.

unios.com/mxguide





Axis
Track Light
MX1 Small (60mm)
Textured White
Bayview, Owston Hill



Axis

Track Light